

A REALTOR WHO KNOWS
ROCKCASTLE COUNTY!

BERKSHIRE
HATHAWAY

FOSTER
REALTORS®

Jennifer Abney
REAL ESTATE AGENT



JENNIFER ABNEY

REALTOR

606-308-3009

THEJENNIFERABNEY.COM

Rockcastle Library
60 FORD DR

MOUNT VERNON, KY 40456-2148

R007

Mount Vernon Signal

Serving Rockcastle County Since 1887

Mount Vernon, Kentucky 40456 - (606) 256-2244

Volume 138 • Number 33

1.00 per copy

Thursday, October 3, 2024

Rockcastle sees remnants of hurricane

By: Mike French
Editor

Compared to several southern states, Kentucky fared well after Hurricane Helene ripped through Florida, Georgia, North Carolina and Tennessee causing over 60 confirmed deaths and destroying countless property, according to news reports.



Rockcastle County road crews and all local fire departments spent most of the weekend and first of the week cleaning trees and other debris from roadways after remnants of Hurricane Helene swept through the county. Jackson Energy officials say power was out for many local residents for several hours after the high winds and heavy rain. Shown above, Rockcastle workers were stopped on Sweetwater Road Saturday as power lines draped across the highway due to broken trees and power lines.

The outer edges of Hurricane Helene made it to Rockcastle County and beyond Friday and Saturday leaving some damage that kept Rockcastle County road work crews busy over the weekend and into Monday. All fire departments were on alert for potential flooding and assisted in traffic problems as well as cleaning debris from roadways.

The high winds and heavy rains caused power outages across the area affecting 13,000 homes serviced by Jackson Energy alone. According to the utility provider, of the 6,156 homes served in Rockcastle, 1,031 were without power during the storm. There were 41 broken poles reported and numerous power lines down. Many Rockcastle residents reported gravel washed out of driveways and water in basements during the storm.

Rockcastle Road Department crews loaded trucks with chainsaws and power equipment just before the storm reached the area in preparation of the coming clean-up efforts. Rockcastle County Schools closed Friday due to the potential

(See "Storm" on A5)

Three arrests made for trafficking in illegal narcotics

By: Mike French
Editor

Three drug trafficking related arrests were reported recently in Rockcastle County.

Kentucky State Police Trooper Ben Allen spotted a van crossing the center line on Maretburg Road on Monday, September 23. Upon a traffic stop, the officer discovered a driver and a passenger along with Theresa Bush in the rear seat. The officer said there was an odor of marijuana present in the vehicle and he asked the occupants to step out of the van.

According to a uniform citation, Bush admitted to having a vape with THC but after a search of the vehicle, the officer located a set of scales along with marijuana, rolling papers and THC cartridges. The citation also says the trooper located a list of names with a suspected price list of illegal narcotics along with three separate baggies containing marijuana. The citation also says Bush handed over meth that had been in her pocket.

Bush was transported to the Rockcastle County Detention Center where she was charged with possession of controlled substance (PCP), trafficking in marijuana and possession of drug paraphernalia. Bush was held on a \$10,000 cash or property bond and was arraigned last week. Her preliminary hearing was set for this week.

On Sunday, September 22, a Mount Vernon po-

(See "Arrests" on A5)

Identity theft

Local man files taxes to find someone had filed in his name

By: Mike French
Editor

Kentucky State Police Detective Ryan Loudermilk arrested Devin Adams, 29, of Mount Vernon on Tuesday, September 24 on the charge of theft of identity.

According to a criminal complaint, the detective received a call from a local resident after the victim attempted to file his 2023 tax return. According to the victim (who asked to remain nameless), his tax return was flagged and rejected as previously filed.

The complaint says Loudermilk had previously worked on a case in which Adams was accused of theft of the identity of the same victim by ordering checks in his name and was already in jail for that case.

However, when the tax case arose, the detective contacted the Kentucky Department of Revenue to discover the falsified tax return listed a Corbin address. The Corbin address used was known to the detective to be an address used by Adams in the previous case this summer.

After receiving a search warrant, the detective searched the residence to find mail addressed to the victim and other papers with his personal information, the complaint says.

The investigation showed a false W-2 form from Waffle House along with the falsified tax return.

Burn ban in effect

The burn ban started this week in Kentucky.

According to officials at local fire departments, forest fire hazard season started Tuesday, October 1 and lasts through December 15.

During the ban, it is unlawful to set fire to any flammable material capable of spreading fire that is located within 150 feet of any woodland or brushland, except between the hours of 6 p.m. and 6 a.m.

Fires may also be set when the ground is covered with snow.

Anyone starting a fire illegally during the burn ban can be cited and receive fines.

County considering new HVAC system with most of remaining ARPA funds

By: Mike French
Editor

Members of the Rockcastle County Fiscal Court held a special called meeting last Thursday to deal with several issues that arose after the regular monthly meeting.

First on the agenda, the court approved an amount into a pot and the insurance company negotiates prices with hospitals, doctors or whatever health source is utilized," he said.

"Then depending upon how much our employee health issues cost that month after the negotiations, the county owes the difference once that original amount has been reached."

Holbrook said that difference is extremely unpredictable each billing cycle. "There were a lot of claims recently which took what the county owes up to \$11,000. We never know how much it will be but whatever it is, it has to be paid," he said.

The court also approved the Rockcastle County Sheriff's Quiescent report which shows 2023 taxes were collected or disposed of properly. The report had to be accepted before the sheriff's office could begin collecting taxes for 2024, Holbrook said.

In other action the court agreed to accept two vehicles into the county fleet and insurance program. The

Fun filled weekend planned in county

By: Mike French
Editor

Once again Rockcastle County will be filled with activity and excitement this weekend.

The Bittersweet Festival on Main Street in Mount Vernon is set for Thursday, Friday and Saturday, October 3, 4 and 5. The event will begin with a car show on Thursday night and will include live music, vendors, food trucks, games and activities for all ages. The annual Bittersweet Parade is planned for Saturday at noon.

The Bittersweet Festival has been a staple event in Mount Vernon since the 1990s and is considered one of the best attended events in the county.

Also this weekend on Friday and Saturday, October 4 and 5, the Southeast Kentucky Antique Tractor Association will host the annual Tractor Show at the Brodhead Fairgrounds.

The event will include food, tractor games, auctions, vendors, campsites, demonstrations and kids activities. The event will begin on Friday at noon and on Saturday at 10 a.m. and everyone is invited to attend.

For more information, call 606-875-2421.

A chance to meet all the candidates for city council

By: Mike French
Editor

This November eleven citizens are running for the Mount Vernon City Council to fill five seats. The Rockcastle Chamber is hosting a "Meet the Candidates" lunch at Marcella's meeting room on Tuesday, October 8th at noon. Lunch will be available for purchase.

Chamber members and the public are encouraged to attend. This is an opportunity to meet the Mt. Vernon citizens that are interested in progress for our city.

Of Special Note Inside

• Viewpoints Pg. 2

• Obituaries Pg. 4

• Puzzle Page Pg. 12

Contact us at: mvsignal@windstream.net

Deadline submission is 4:00 p.m. Monday

• Sports Pgs. 6&7

• Classifieds Pg. 13

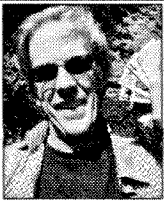
Deadline is Monday at 4 p.m.

Call 606-256-2244 for Advertising & Subscriptions



Aces Over

By: Mike French



For quite some time my family had planned a trip to Destin, Florida. It was scheduled for last week. What are the odds that a category 4 hurricane would rear its ugly head the day we left. Change of plans.

We discovered Alabama had beaches and they were out of the way of Hurricane Helene. So we headed to the Gulf Shores in a rented car. Somehow we drove around the entire storm and avoided all of it.

It got interesting quickly. I set the cruise control on the rented vehicle at 74 and I sat back for a long drive. But I started to notice the steering feeling, well...funny. Something wasn't right. The car seemed to fight me unless I was in the center of the lane. Then once I tried to change lanes, that's when the car went crazy. Lights started flashing and buzzers buzzing and bells dinging and the steering wheel all but refused to let me change lanes.

It hit me that it was one of those self driving cars. When you set the cruise control, it kept me in the center of the lane and when I get too close to either white line, it made it mad at me. I was never so amazed in my life. The car drove itself!

I was astonished. To be honest, I had heard of it but it was still sort of a futuristic, fantasy thing in my head. When this car started arguing with me, it was the biggest brush I

have had with technology since "automatic transmissions" became standard equipment.

I started letting it make decisions, with my hands holding on in case it made a decision I didn't like. But it didn't. It actually drove better than I do. When left to my own mental ramblings, I occasionally hit a rumble strip or get close to the center line. But this car kept itself dead center in my lane.

I got more and more comfortable with it as the miles added on and soon I was able to talk with the family and enjoy the scenery myself while the car took us down the road.

Moments later we started getting close to a vehicle in front of us and sure enough, the car slowed down and paced itself exactly two seconds behind it. When I turned on the turning signal and switched to the passing lane, the cruise kicked in again and the car leapt back to 74 mph staying in that lane perfectly. I was in awe. It was the greatest new toy I had ever played with.

Once a car with flashing lights was on the side of the road and my car slowed down, moved away from the vehicle then sped back up and put me back in the center of the lane after we passed it. Even in sharp curves the car stayed dead center.

This may not be interesting to everyone but to me it was a culture shock I don't think I will ever forget it. When I started driving, it was in a 1995 Ford F-100 and it didn't even change gears without me pushing in the clutch and shifting the gearshift on the column. The dimmer switch was a button in the floor and the am radio sounded like a victrola. We had to hand crank the windows up and down and pull the choke button out to start it.

Now I was in a car that didn't really need me once we started rolling. It was amazing.

Like most of you, my first thought was, "Ohhh no! This won't do! I don't need a car making decisions." I even considered taking it back and getting a different one. But after about 100 miles, it started growing on me. By the time we reached the ocean, I was mentally asking the car where it wanted to go next. It was one of those new technologies that I would become quickly completely dependent upon. If such cars were everywhere, I would forget how to drive in a few years and it would be dangerous to put me in a car that didn't have such technology.

Anyway, I thought I would warn those who were not aware. Such cars are coming. This was a 2024 Nissan Rogue, but I would guess that within a few years, all vehicles will have this technology. As it stands currently, you still have to pay attention and be alert and take part. But in all honesty, if I had napped for a few minutes, it wouldn't have mattered other than scaring my passengers to death.

The technology will grow quickly! These cars will be everywhere very, very soon. But here is a fresh warning or alert from me to you. Very soon, this will be the norm and you will either be in such a car or passing cars like it every day.

But as wonderful as it was, I don't trust it.....Yet. Keep your eyes out for napping drivers. I am more afraid of others drivers than I am self-driving cars.

Rockcastle Historical Haven

Presented by Rockcastle Historical Society

By: Markita Proctor

Sitting Up With the Dead and Other Old Rituals of Death and Dying

October has rolled around again, and we turn to the dark, mysterious, and macabre. Death is a mystery and has many long-standing rituals that can be traced back in Appalachia's history.

Sitting up with the dead or the Appalachian death vigil:

Before funeral homes were a common business it was common for the loved ones-family and friends to sit up with them for at least one night and day.

Many European immigrants found their way into Appalachia and the hills of Kentucky. They brought with them many customs and traditions that have held on long after their passing. Sitting up with the dead is one such custom. Again, long before there were funeral homes and before the process of embalming was common practice, the body of the deceased would be taken home (if they had not died at home) and the body would be "prepared" by family members, usually the wife, mother, or sister. The body would be washed and dressed and then "laid out." According to an article published on the website,

ournativecarolina.com, the body would be placed on a cooling board or "laying out" board. Typically the board would be placed between two chairs or even sawhorses. "Depending on what position the person was in when they died, sometimes it was necessary to break bones or soak parts of the body in warm water to get the corpse flat on the board. As rigor mortis began to set in, some folks have actually heard bones cracking and breaking which would cause the corpse to move as it began to stiffen. The board would then be covered with a sheet and a rope was used to tie the body down to keep it straight and to prevent it from suddenly jerking upright." The body would be washed with lye soap and for some, a mixture of soda water or aspirin water might even be used to wash the skin to keep it from discoloration before burial. Someone would comb the hair and even shave the face if necessary. The final steps of laying out the body involved crossing the arms, tying the feet together, tying a handkerchief under the chin to keep the mouth shut, and finally, if the person had died with their eyes open, the eyes would be shut and coins would be placed on the eyelids to

keep them shut. The body would be dressed in their best outfit, placed in the coffin, which would have been recently built by the son, father, or brothers, or close friends, and placed in a central location for viewing. "Most times a handmade quilt would be placed over the body along with flowers and herbs. The ritual of sending flowers to a funeral came from this very old tradition. The aroma from the profusion of flowers around the deceased helped mask the odor of decomposition." If the person had died in warm weather a veil might also be placed over them to keep the flies away. Often times a young child would be given the duty of fanning away flies for the duration of the vigil. After the invention of photography, for those who could afford a photographer and later a camera, pictures would be taken of the body on display, for loved ones to keep.

As word got out that the person had died, neighbors would come with food, coffee and other refreshments. The effinghamherald.net website describes the custom as such, "when the body had been prepared and displayed was accompanied with many people visiting and some staying all night. They consumed lots of coffee and snacks throughout the night. A member of the family usually took turns with the sitters in keeping the vigil known

(Continued on A3)

Mount Vernon Signal

Publication Number 366-000
Periodical Postage Paid in Mt. Vernon, Ky. 40456
606-256-2244

Published every Thursday since November, 1887. Offices in the Mt. Vernon Signal Building on Main Street in Mt. Vernon, Ky. 40456. Postmaster, send address changes to P.O. Box 185, Mt. Vernon, Kentucky 40456.

James Anderkin, Jr., Publisher Emeritus
Perlina M. Anderkin, Publisher
Paige Benge, Advertising/Composition Manager
Mike French, Editor

SUBSCRIPTION RATES
In County - \$30.00 Yr. Out-of-County - \$35.00 Yr.
Out-of-State \$40.00 Yr.
e-mail address - mvsignal@windstream.net

JACKSON ENERGY

A Touchstone Energy® Cooperative

WE ARE CELEBRATING YOU!

Member Appreciation Days

Register for the Annual Business Meeting and receive your bucket, bulb and lots more!
Drive-thru registration at each location

3 DAYS - 7 COUNTIES:

| | |
|---------|--|
| OCT. 15 | LEE COUNTY Beattyville District Office |
| OCT. 15 | ROCKCASTLE COUNTY Renfro Valley |
| OCT. 15 | ESTILL COUNTY Meade's Do-It Center |
| OCT. 16 | CLAY COUNTY Manchester Office |
| OCT. 16 | OWSLEY COUNTY Booneville's United Methodist Church Life Center |
| OCT. 16 | LAUREL COUNTY London District Office |
| OCT. 17 | JACKSON COUNTY McKee District Office |

10 a.m. to 2 p.m.
Members may register at ONE event only

Annual Business Meeting

Thursday, October 17 - 3 p.m.
McKee District Office

- Board election voting hours: 10 a.m. - 2 p.m.
- One vote per membership
- Voting will be in-person and ballots submitted electronically
- Photo identification will be required
- Visit jacksonenergy.com for more information
- Must be present to win cash prizes

Community Trust Bank

Member FDIC

We will adjust our hours for the Bittersweet Festival of our Downtown Office

120 East Main Street, Mount Vernon, KY 40456

Friday, October 4th
Lobby will remain open until 4:00 PM | Drive-Thru will CLOSE at 11:00 AM

For your convenience

Mount Vernon Main Office Drive-Thru
2134 Lake Cumberland Road, Mount Vernon, KY 40456

Friday, Oct. 4th open until 6:00 PM | **Saturday, Oct. 5th** open 8:30 AM - 12:00 PM

www.ctbi.com

Eye test required in 2025 when renewing driver's license in 2025

Few things are more important for safe driving than good eyesight. That's why vision screening will be required in Kentucky next year for anyone renewing a Kentucky driver's license. This new requirement, enacted during the 2021 General Assembly, aims to promote highway safety by ensuring that all drivers maintain good vision throughout their driving career.

Starting January 1, 2025, all Kentuckians must undergo a vision screening to renew their license. Multiple states also have adopted mandatory vision screenings, including Indiana, Ohio and Missouri, to ensure drivers have the visual acuity required to operate a vehicle safely.

"Driving is a privilege many of us enjoy and this best practice is one way we look out for each other on the road to make our highways safer for everyone," said Gov. Andy Beshear.

House Bill 439, signed into law by Gov. Beshear after the state legislature passed it three years ago, now takes effect on January 1, 2025. Key details of the new vision screening process include

- Vision screenings can be completed at no cost at any Kentucky Transportation Cabinet (KYTC) Driver Licensing Regional Office at the time of license renewal and, on average, takes less than 1 minute to complete.
- Drivers also have the option of conducting a vision exam with their vision specialist (optometrist/ophthalmologist), or a vision screening with a KYTC-credentialed osteopath, physician, or advanced practice registered nurse in advance of their license renewal visit. Starting in 2025, upon request,

the medical professional will complete an approved state-issued form that they will give to the patient if they pass. The patient may bring the form to their license renewal visit if the form and exam were completed within 12 months of the license renewal visit. The driver will not need to take a vision screening at a regional office.

- If a driver does not pass the vision screening at a regional office, they will be instructed to see a vision specialist for corrective measures before proceeding with license renewal.
- Kentuckians are encouraged to bring corrective lenses if conducting a vision screening at a regional office. A restriction will be placed on your license if you pass the vision screening while wearing glasses.
- Vision screenings can only be performed once at a regional office during each renewal cycle.
- Online and mail-in driver's license renewal will still be available after Jan. 1, 2025 for Kentuckians who choose to complete a screening with a vision or qualifying medical specialist. The cardholder simply needs to upload the official, signed form provided by their medical professional when renewing on drive.ky.gov.

"We know this will be a change for license holders when it's time to renew every four or eight years, but it's a measure driven by safety, and that's something we can all get behind," said Transportation Cabinet Secretary Jim Gray. "People are the most precious cargo on our roads."

Existing state law allows Kentuckians to re-

new their driver's license up to 180 days (roughly 6 months) before their card expiration date. It is strongly advised to renew early should any corrective measures be needed to improve vision while their license is still valid. During every renewal cycle for drivers 21 years of age or older, cardholders have the option of choosing a driver's license valid for four or eight years.

Appointments for license renewals are strongly encouraged to minimize wait times, although walk-ins will still be accommodated. No separate appointment is needed for the vision screening.

"Clear vision is essential for making safe decisions on the road," said Kentucky State Police Driver Testing Branch Commander Captain Chris Baker. "Mandatory vision screenings have been a longstanding requirement for all first-time drivers and expanding this to all drivers is a practical way to make roads safer for everyone."

"Comprehensive eye exams are crucial for detecting impairments that could compromise driving ability, while also detecting other serious health conditions," said Leslie Cecil, O.D., President of the Kentucky Optometric Association. "This new vision screening requirement is a significant step in safeguarding public health and road safety. Our organization looks forward to collaborating with the Transportation Cabinet and other vision specialists to help implement these new requirements."

"The Kentucky Academy of Eye Physicians and Surgeons (KAEPS) supports the new requirements

for vision screening in order to get a driver's license in the Commonwealth," said John Franklin M.D., President of KAEPS. "Our association believes it will keep Kentucky's roads safer and ensure individuals get the vision care they need. We also appreciate the Administration's commitment to implementing the legislation in a way that helps the public understand the new requirements, why they are needed and how to comply. Our physicians will continue to work closely with the Administration and legislators as the new

Haven

(Continued from 2)

as a "wake" so that the deceased was never left unattended. A large breakfast was served and later a meal before or after the funeral was prepared and served by the community members." Women would usually sit nearest the body while men would gather on the porch or out in the yard, depending on the weather. The idea was that the body would never be left alone until burial. Stories would be told, and memories shared. It would not have been unheard of for a guitar or harmonica to appear and songs sung. It would also not have been unheard of for a jar of 'shine to be passed around.

After midnight the crowd would dwindle to just close family and friends left to grieve. Some would stay for days after the death to help clean up and to help put the deceased's final wishes in order. Usually the next day or within just a few days (if loved ones had to travel to get there) the body would be laid to rest, typically in the family plot or nearby the family home. The coffin would be lowered into the ground and mourners themselves would shovel the dirt over the casket. The funeral was complete when the grave had been filled.

Many argue that the act of sitting up with the dead was done to ensure the "deceased" was indeed dead and subsequently buried alive. Regardless, it was a common practice for centuries and the concept is still carried out to a certain extent. Although funerals are rarely held in the family home, and a mortician will tend to the body today, the tradition of family and friends gathering continues. Stories and memories are still shared. Food and flowers are brought and the grieving process is still honored

rules take effect." -

The Education and Labor Cabinet's Office of Vocational Rehabilitation's (OVR) existing Bioptic Driving program helps eligible Kentuckians with certain visual impairments earn their drivers' licenses. Using a combination of regular eyeglasses and a small telescopic lens system, bioptic driving improves the driver's distance vision, allowing them to meet the state vision test requirements to safely operate a vehicle. To learn more about the qualifications and requirements for participation in the Bioptic Driving Program, check out this short video or visit OVR's website.

For more information on the new vision screening requirement and how to prepare for your driver's license renewal, visit drive.ky.gov/visionscreening. Kentucky CDL carriers with a valid, unexpired license are exempt from conducting a vision screening when renewing their license as their annual required medical certification process now will include the new vision screening.

Rockcastle Community Bulletin Board

Freedom From Smoking

Rockcastle Regional Hospital is offering free smoking cessation courses beginning October 23. For more information, call Kayla at 606-256-7383

Rockcastle County Bookmobile Schedule

No service week of October 7th.

Class of 2004 20th Year Reunion

The RCHS Class of 2004 will hold their 20th Year Reunion on **Saturday, October 12, 2024** at Limestone Bar & Grille from 7 to 10 p.m. Food and drinks will be available to purchase at the restaurant. For questions, text 606-308-4044.

TOPS (Take Off Pounds Sensibly)

TOPS, Take Off Pounds Sensibly, meets every Tuesday at 5:30 p.m. in the Brodhead Community Center.

Vietnam Veterans Meeting Date

Vietnam Era Veterans, that attended Livingston High School, are asked to meet the last Thursday of each month at 10 a.m., for breakfast and conversation, at Marcella's.

Weekly Grief Support Group

There is a Weekly Grief Support Group which meets each Thursday at 2 p.m. at Hospice Care Plus & Compassionate Care Center, 350 Isaacs Lane, Richmond. Please pre-register at hospicecareplus.org or by calling 859-986-1500. Open to anyone whose loved one was cared for by Hospice Care Plus. If travel is an obstacle, contact Abby at the number above to request alternative grief support options.

Kiwanis Club Meeting

The Rockcastle Kiwanis Club meets at Limestone Grille each Thursday at noon. Kiwanis is a service organization working to improve the lives of children. The public is invited.

Chamber of Commerce Meetings

The Rockcastle County Chamber of Commerce meets once a month, on the third Tuesday, at noon at Limestone Grille. All members are encouraged to attend.

VFW Post 5908

Rockcastle Memorial VFW Post 5908 at Lake Linville welcomes all military service members and their families. The post is open by appointment only, currently. If you would like to rent our event hall for special occasions, please call the number below. Monthly meetings are held on the 3rd Saturday of every month at 5 p.m. Those wishing to contact the VFW for help, information or any need, please contact Post Commander Michael Parsons 859-308-3568 and Chaplain William B.J. Thomason at 606-392-1207.

DAR Meetings

The Rockcastle Chapter of the Daughters of the American Revolution meets the first Monday of each month, September-May at 6 p.m. at First Christian Church in Mt. Vernon. All prospective members are welcome to attend.

Rockcastle Historical Society & Museum

The Rockcastle County Historical Society & Museum meets the 3rd Tuesday of each month at 5:30 p.m. at RTEC garage/training room.

Mt. Vernon Lions Club

The Mt. Vernon Lions Club meets on the first and third Tuesday of each month at 6 p.m. at Limestone Grille.

American Legion Post News

The David M. Smith American Legion meets at the Veterans Center the second Thursday of every month at 6 p.m. For more info, call Commander Kathy Bobo at 606-308-1208 or District Commander B.J. Thomason at 859-358-2882.

Rockcastle UNITE Coalition

The Rockcastle County UNITE Coalition meets the 2nd Wednesday of each month at noon at Marcella's Farm to Fork Restaurant to plan activities. Please join us each month.

Celebrate Recovery/AA/NA

Monday-Celebrate Recovery-Brodhead: Community Outreach Center, Monday, 6 p.m. 36 Castle Village Dr., Brodhead, Ky. Contact: Nathan DeLeon 859-230-9590, Kathryn Pope 606-308-3099.

Tuesday-Celebrate Recovery-Mt. Vernon: Northside Baptist Church, 777 Faith Mountain Rd., Mt. Vernon, Ky. Tuesday, 6 p.m. Contact: J.R. Cornelius 859-314-7828.

Tuesday - MARA - Medicated Assisted Recovery Anonymous - Mt. Vernon: 2 p.m., 75 East Main St., Mt. Vernon. Contact: 606-308-8900 for info

Wednesday-Air-All In Recovery-Mt. Vernon: 12 p.m. 75 East Main St., Mt. Vernon, KY. Contact: 606-308-8900 for more info.

Thursday-Celebrate Recovery-Step Studies - Women Only: Community Outreach Center, 36 Castle Village Dr., Brodhead, Thursday, 6 p.m. Contact: Kathryn Pope, 606-308-3099 or Shell Bader 606-219-5653.

Thursday-Alcohol Anonymous-Brodhead: 7 p.m. 75 East Main St., Mt. Vernon, Ky. Contact: 606-308-8900. Please park in the Coffey & Ford parking lot

Sunday - Celebrate Recovery Step Studies-Men Only. 6 p.m. Northside Baptist Church, 777 Faith Mountain Rd., Mt. Vernon, Ky. Contact: Jason DeBord 606-386-0646 or J.R. Cornelius 859-314-7828.

MVES Trunk-or-Treat



Attention local businesses and churches... we are searching for participants for our second annual trunk-or-treat. What is Trunk-or-Treat? It is a trick-or-treating opportunity for our students to participate in during school and a treat of giving opportunity for our community churches and businesses. We invite you to join us by decorating the trunk of your car and passing out treats to our students during our storybook parade. Treats can be the traditional candy or healthier snack, such as pretzels or fruit roll-ups, pencils, stickers and any other treats you would like to give. Everyone wears their Halloween costumes (no masks or scary costumes) and have lots of fun. We would love for you to join in on the fun and make it a memorable day for our students.

If you are interested in participating please contact Sierra Williams at Mount Vernon Elementary School at 606-256-2953 or by email sierra.williams@rockcastle.kyschools.us

1. Sign-up your business to be a part of our event.
2. Decorate your vehicle (usually with the trunk end facing the trick-or-treaters.)
3. Bring candy/goodies for 640 kids to hand out to the students.

Where: Mt. Vernon Elementary Bus Loop
When: Friday, October 31, 2024
Time: Set up begins at 12:00 p.m.
Trunk-or-Treat beings at 1:00 p.m.

AUTO | HOME | LIFE | BUSINESS | A MEMBER SERVICE | KYFB.COM

You're more than a policy number.

You're a friend.



In cities and small towns, Kentucky Farm Bureau is the insurance provider with a big commitment to securing your biggest investment – your home.

John Lawson - Agency Mgr.

Christa Taylor, Agent

U.S. Hwy. 25 S • Mt. Vernon

606-256-2050

KENTUCKY FARM BUREAU

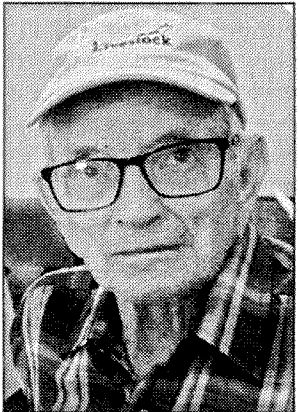


BIG ON COMMITMENT.

Obituaries

Proctor Brock

Proctor Brock, 93, of Copper Creek, died Thursday, September 26, 2024 at his home surrounded by his loved ones. Proctor was born October 23, 1930, at Forrester's Creek, Harlan County, to his loving parents, Mose Bradley Brock and Verla Mae Brummett Brock. On June 15, 1957, he married his wife of 47 years, Opal June Jones Brock.



Those left to celebrate his life are: his children, Proctor Dale Brock, Roger (Tammy) Brock and Judy (Ralph) Baker; grandchildren, Jordan Tyler Brock and Kaylee Alexis June Brock, both of Crab Orchard, and Ivy Singleton of Livingston, whom he loved as a daughter; and three sisters and two brothers, Evelyn Hilton Abbott of Berea, Francene Brock Ledford of Crab Orchard, Lavena Faye (Gary) Gregory of Indianapolis, IN, Mose Brock of Kings Mountain, and Dallas (Ruby) Brock of Copper Creek.

Besides his parents, he was preceded in death by: his wife, Opal Jones Brock; his daughters, Benita Faye and Renita Kay Brock; brother, Virgil Lee Brock; infant sisters, Matilda and Corine Brock; brothers-in-law, Garfield Hilton, John Ledford, and Carl Abbott; sister-in-law, Naomi Brock; and nephews, James Avery Ledford, Bill Sulfridge and Herbert Brenda.

Proctor was a Veteran of the Army's 101st Airborne stationed in Germany. Proctor loved his family and farmed endless long days and endured many difficult years to provide for his family and pay for his farm. He loved the land and was a successful lifelong farmer. He loved to talk with friends and neighbors. He never met a stranger. He was generous with what he had and allowed many to hunt, fish and camp on his farm. The greatest and most important thing he did in his life was ask Jesus to save him.

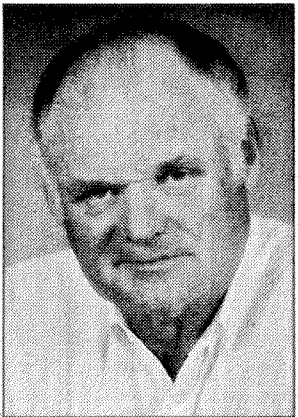
Casketbearers were: Charles Ledford, James Brock, Gabriel Gregory, Tim Brock, Derek Brock, and Jordan Brock.

Funeral services were held Tuesday October 1, 2024 at the Marvin E. Owens Chapel with Bros. Ralph Baker and Mike McFerron officiating. Burial was at Piney Grove Cemetery, with Military Honors by the Rockcastle Honor Guard.

In lieu of flowers please make donations to Gideons International.

Richard Sexton

James Richard Sexton, 81, of Scaffold Cane, died Monday, September 23, 2024 at his home. He was born at Climax in Rockcastle County on October 20, 1942, the son of Blueford and Stella Sexton. He was a retired 50-year contractor for Herb Geddes Fence Company of Nicholasville and was a member of Big Hill Holiness Church.



He is survived by: a son, Doug Sexton and wife Christi of Kingston; three daughters, Bonita Corely and husband Richard, and Shawnrie Bone and husband Dave, both of Florida, and Cheyenne Isaacs and husband Steve of Mt. Vernon; a step-son, Wendell Martin and wife Jenny of Three Links; two step-daughters, Vicki Hisle and husband Gary, and Benda Hall, both of Mt. Vernon; and two brothers, Bill Sexton of Climax and Marion Sexton of Orlando. Also surviving are 10 grandchildren, nine step-grandchildren, and several great grandchildren. In addition to his parents, Blueford and Stella Sexton, he was preceded in death by: his loving wife of 48 years, Mary Ellen Sexton; step-daughters, Sandra and Wilma; and a step-grandson, Shane Noble.

Funeral services were conducted Saturday, September 28, 2024 at the Dowell & Martin Funeral Home Chapel by Bros. Gary Lee and Duane Allen. Burial followed in Scaffold Cane Cemetery.

Pallbearers were his friends and colleagues from Geddes Fence Company.

Please visit www.DowellMartin.com or Dowell & Martin Funeral Home's Facebook page to view online obituary.

Barbara Sue Allen

A celebration of life will be held for Barbara Sue (Whitaker) Allen on Saturday, October 12th starting at 12:30 at the home of Ronnie and Lisa Hayes, 346 Brownie Branch Rd., Mt. Vernon.



Barb did not want a funeral. She wanted everyone to have a good time. She wanted everyone to bring a dish and talk about the good times that she had with them so friends, family, co-workers, all come join and celebrate the life of Barb Allen, my sister.

Sincerely,
Lisa Hayes, Terry Zapf and Liz Williams.

Helen Price

Helen Marie Price, 79, of Harrodsburg, died Saturday, September 21, 2024 at her home. She was born in Rockcastle County on December 26, 1944, the daughter of John William and Anna Caroline McClure Smith. She was a retired nurse's aide and was of the Pentecostal Faith.



She is survived by: her daughter, Joyce Michelle Durham Price of Harrodsburg; her grandchildren, Trina Sagracy and husband Steven, Austin Gray, Maiden Griffin, Elijah Griffin, Tricia Sallee

and husband Nick, Robert Price, Brandon Price, and Nikki Price; her great grandchildren, Alitia Griffin, Ivy Sagracy, October Sagracy, Lyrie Sagracy, Roy Carr, Corey Carr, Kristopher Price, Gabriel Price, Evelyn Price, Grayson Price, and Harper Morrow; and her brothers and sisters, Terry, Wayne, Susie, Joyce, Jean, and Judy.

Graveside services were conducted Wednesday, September 25, 2024 at Smith Cemetery at Burr.

Arrangements were by Dowell & Martin Funeral Home.

Please visit www.DowellMartin.com or Dowell & Martin Funeral Home's Facebook page to view online obituary.

Farmer Waddle

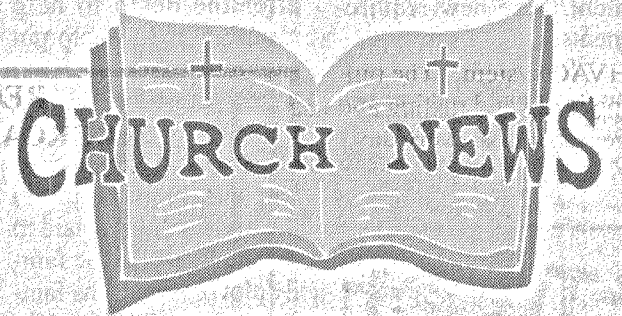
Farmer Waddle, 93, of Livingston, widower of Beatrice Waddle, died Monday, September 30, 2024 in Lancaster.

Funeral services will be Thursday, October 3, 2024 at 11 a.m. at Dowell & Martin Funeral Home. Burial will follow in Morning View Cemetery.

We ask that you please respect the family's private visitation time prior to public visitation hours beginning at 10 a.m. Thursday.

A complete obituary will appear in next week's Signal.

Please visit www.DowellMartin.com or Dowell & Martin Funeral Home's Facebook page to view obituary.

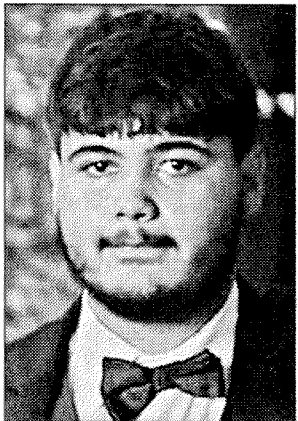


Yard Sale/Bake Sale

Faith Chapel Pentecostal Church will be having a yard sale/bake sale on October 5, 2024 at the Fellowship Hall from 9 a.m. to 2 p.m. Come on down and find some good sweet treats and some bargains at 2767 South Wilderness Road, Mt. Vernon. Pastor: Jack Carpenter. Asst. Pastor: Ronnie Spoonamore.

Jared VanWinkle

Jared Hunter VanWinkle, 18, of Berea, died Tuesday, September 17, 2024. He was born in Winchester on April 12, 2006. He was very good at his job as a manager and cook at Popeyes Chicken and was a member of Liberty Avenue Baptist Church of Berea. He enjoyed welding, riding his bike, and playing Xbox.



He is survived by: his mother, Sabrina Mahaffey and partner John Malchow of Berea; four brothers, Christopher VanWinkle and Brandy Davis, Nathaniel VanWinkle and Bailey Ellis, Chad VanWinkle and Dorothy Abner, and Jacob Quintero; two sisters, Jacqueline VanWinkle and Adrianna Pena; and his girlfriend, Constance Raney. He was preceded in death by his maternal grandmother, Verla Shelton, and his great grandparents, Slim and Geneva Bennett.

Funeral services were conducted Tuesday, September 24, 2024 at Liberty Avenue Baptist Church in Berea by Bros. Jim Miller, Ken Felty, and Waylon Clemmons. Music was provided by Bro. Jason Medley and Bobby and Shawna Barnett. Burial followed in the Berea Cemetery.

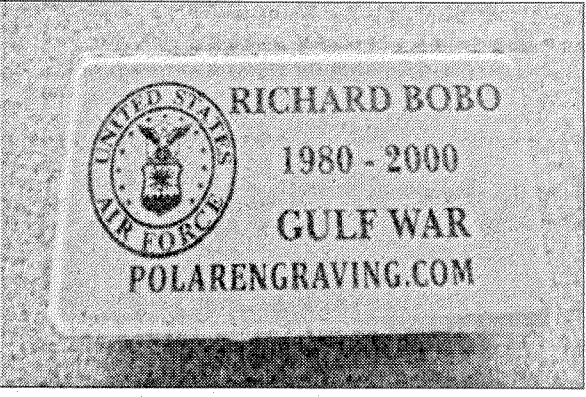
Arrangements were by Dowell & Martin Funeral Home.

Please visit www.DowellMartin.com or Dowell & Martin Funeral Home's Facebook page to viewonline obituary.

“Walk of Honor” Fundraiser

The “David M. Smith” American Legion Post 71 and the Veterans of Foreign Wars Post 5908 are holding a brick fundraiser to construct a “Walk of Honor” at the recently opened Rockcastle County Veterans Park.

Engraved bricks will be the foundation and will honor Rockcastle County Veterans, past and present. Order forms will be distributed by members of the two organizations. If you have any questions or would like an order form contact Richard Bobo at (606) 308-2271 or email boborichard719@gmail.com.



Gospel Meeting

October 2nd through October 6th

Chestnut Ridge Church of Christ

Located at: 110 Burr Rd, Mt. Vernon, KY



Brett
Hickey

Service Times

| | |
|---------|-------|
| Wed-Fri | 7 pm |
| Sat | 6 pm |
| Sun | 10 am |

Contact

Ova Baker: (606) 224-1480
Dale McNew: (859) 582-4021
Luke Goad: (209) 840-7560

Storm

(Continued from front) weather and allowed students to work from home. The district also extended the deadline for some homework to be completed since many homes were without internet while utility crews worked feverishly to restore power.

Judge/Executive Howell Holbrook said crews worked through Monday to dispose of the many trees on the road-sides that crews had cleared from roadways.

Arrests

(Continued from front) lice officer attempted to serve a warrant on Michael Denny, 54, of Mount Vernon, but during the standard search, located suspected heroin that had been separated into smaller bags, the citation says.

Denny was transported to the Rockcastle County Detention Center where he was charged with possession of drug paraphernalia and trafficking in controlled substance. Denny was held on a \$20,000 cash or property bond and a pre-

liminary hearing was set for this week.

On Friday, September 13, a Mount Vernon police officer was called to a two vehicle accident on I-75. The officer smelled marijuana from one of the vehicles involved and after dealing with the accident, the officer had the occupants exit the suspect vehicle.

Seeing one of the five passengers attempting to hide a bag, the officer searched the passengers, according to the citation.

Michael Robbin, 26, of Ohio was then found to have two marijuana joints on his person. A search of the vehicle in question then revealed 100-150 Oxycodone pills, a Smith and Wesson handgun with two loaded magazines, marijuana joints, and more bags of marijuana in the back of the car.

The citation says Robbin claimed ownership of the baggie with the pills and its contents.

Robbin was transported to the Rockcastle County Detention Center where he was charged with trafficking in a controlled substance (enhanced), trafficking in marijuana (enhanced and possession of drug paraphernalia (enhanced).

Robbin was held on a \$20,000 cash or property bond and had a preliminary hearing set for this week.

HVAC

(Continued from front) project by the Rural Development Center which will bring high speed fiber optic internet to 26 homes and businesses in the Livingston area, Holbrook said.

Once the cost of the project is known, Holbrook will be able to request the funds be released for the project, he said.

The court also agreed to make a payment on the new 911 recording system which permanently records all calls to 911. Holbrook said the funds will be fully reimbursed through grant funds already approved.

Holbrook also once again brought up the issue of the courthouse HVAC (Heating/Ventilation/Air Conditioning) system that he hopes can be replaced with ARPA funds.

When the county received about \$3 million in ARPA (American Rescue Plan Act) Funds, about one million was placed into the local detention center operations account. Since the county spends nearly \$1 million each year in operational expenses to have a detention center, officials said the \$1 million would pay for the jail operations for a year. "It was nice not to have to use other sources for a year," said Holbrook. "But that year is up now and the county has to start using funds to operate the jail again," he said.

However, Holbrook says the remaining \$2 million has been unused and he has been advocating using the funds to replace the courthouse HVAC system. "The piping is old and rusting and getting worse every day," he said. "Most parts were installed in the 1960s and aren't made anymore. The system is in bad shape and it would be much better to replace it while we can with something more efficient and more dependable, than to wait until we have to replace it and don't have the money as readily available," he said.

The court agreed Holbrook should begin to gather estimates and a project scope and bring them before the court at a later date.

Having no further business, the meeting was adjourned.

Theft

(Continued from front) mation, including bank records and personal identification numbers.

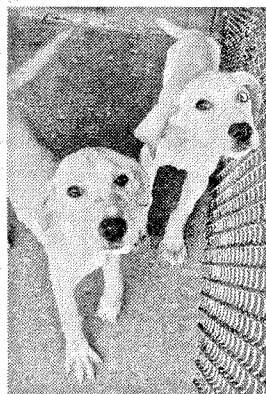
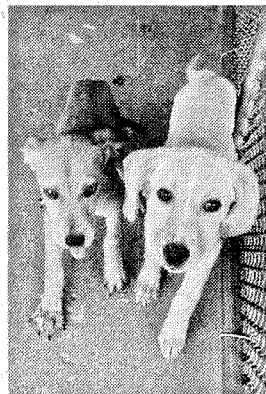
Officials say there were 5,340 cases of identity theft in Kentucky last year. Under Kentucky law, identity theft is a Class D felony punishable by up to 12 years in prison and up to \$500,000 in fines. Officials say anyone who suspects they may be a victim of identity theft

should contact the Federal Trade Commission at identitytheft.gov.

Adams is being held on a \$5,000 bond for the

check ordering case and a \$10,000 bond for the tax theft, according to County Attorney Jeremy Rowe.

Pawfect Pets



This week's installment of Pawfect Pets includes four lab mix puppies. All are female and about four months old. They are very friendly and super sweet. Anyone interested in adopting one of these pets or any other animal at the Rockcastle County Animal Shelter, should visit the shelter or call 256-1833. There will be a \$20 adoption fee.

Free Smoking Cessation Course

Are you ready to live a tobacco free life?

If you would like to quit smoking or using other tobacco products, Rockcastle Regional Hospital can help. Using an innovative smoking-cessation program called Freedom From Smoking, we can help you become tobacco-free.

Join us **Wednesday, October 23** to start the 8-week program sponsored by Rockcastle Regional Hospital. Classes are Wednesdays at 5-6 p.m. (Meet in the hospital lobby.)

Interested in participating? Contact Kayla Abney at 606-256-7383 or k.abney@rhrcc.org.

Join the hundreds of other Kentuckians who have quit for life!



REQUEST FOR PROPOSALS ROCKCASTLE COUNTY FISCAL COURT LIVINGSTON FIBER PROJECT

CONTACT: ROCKCASTLE COUNTY FISCAL COURT
205 E. MAIN STREET MT. VERNON, KY 40456
PHONE: 606-256-2856, HOLBROOKHH@WINDSTREAM.NET

Rockcastle County Fiscal Court is requesting proposals from all interested providers of High-Speed Internet/Broadband services for affordable, reliable high-speed Internet access in the form of Fiber to the Premise (FTTP) for the Livingston area of ROCKCASTLE County. The goal is to make high-speed internet available to all the broadband serviceable locations within the project area. Each proposal received in response to this RFP will be evaluated on the criteria described in the RFP. All proposals must be sealed, clearly marked "PROPOSAL – LIVINGSTON FIBER PROJECT" and must include all elements described in the PROPOSAL CONTENT AND FORMAT REQUIREMENTS section of this RFP. Proposals may be picked up from the Judge Executive's office. The Rockcastle County Fiscal Court reserves the right to reject any and all responses, to waive any informalities or irregularities therein, and to accept the proposal that, in its opinion, is in the best interest of Rockcastle County. All proposals are due by December 10, 2024 12:00 p.m

NOTICE

Kentucky-American Water Company provides notice that it is filing with the Kentucky Public Service Commission ("Commission") in Case No. 2024-00272 a request for an increase in the amount of its Qualified Infrastructure Program Rider ("QIP Rider"). The filing will be made no later than August 31, 2024 with a request for the new QIP Rider to be effective on January 1, 2025. The QIP Rider as of August 15, 2024 is 6.58%. The amount as of September 1, 2024 is expected to be 6.41% and calculations herein are based on that amount. The proposed increase is an addition of 1.84% for QIP investments to be made during calendar year 2025 and a 3.04% balancing adjustment for the QIP 4 period of twelve-months ended June 30, 2024 for a cumulative proposed QIP Rider of 11.29%. The QIP Rider applies to Residential, Commercial, Industrial, Other Public Authority, Sales for Resale, and Public and Private Fire Service and Hydrant customers. The additional revenue to be requested in this QIP Rider filing is \$2,213,890. The balancing adjustment requested in this filing is \$3,666,335. Average usage, in hundreds of gallons, for each customer class to which the QIP Rider applies is: Residential: 38; Commercial: 355; Industrial: 18,327; Other Public Authority: 1,294; Sales for Resale: 11,837; Public and Private Fire Service and Hydrant: 0. The effect on the current average monthly bill for each customer class to which the increased fee applies is: Residential: \$1.98 (4.87%); Commercial: \$10.78 (4.87%); Industrial: \$432.28 (4.87%); Other Public Authority: \$39.87 (4.87%); Sales for Resale \$310.51 (4.87%); Public Fire Hydrant: \$2.63 (4.87%); Private Fire Service 6": \$4.24 (4.87%); and Private Fire Hydrant: \$4.13 (4.87%). Any person may examine this filing at Kentucky-American Water Company's offices located at 2300 Richmond Road, Lexington, Kentucky 40502, and on the utility's website at <http://www.amwater.com/kyaw/>. This filing may also be examined at the Public Service Commission's offices located at 211 Sower Boulevard, Frankfort, Kentucky, Monday through Friday, 8:00 a.m. to 4:30 p.m., or through the Commission's website at <http://psc.ky.gov>. Comments regarding this filing may be submitted to the Public Service Commission through its website or by mail to Public Service Commission, P.O. Box 615, Frankfort, Kentucky 40602. The fees contained in this notice are the fees proposed by Kentucky-American Water Company, but the Public Service Commission may order fees to be charged that differ from the proposed fees contained in this notice. A person may submit a timely written request for intervention to the Public Service Commission, P.O. Box 615, Frankfort, Kentucky 40602, establishing the grounds for the request including the status and interest of the party. If the Commission does not receive a written request for intervention within thirty (30) days of the initial publication or mailing of this notice, the Commission may take final action on the filing.

REQUEST FOR QUALIFICATIONS

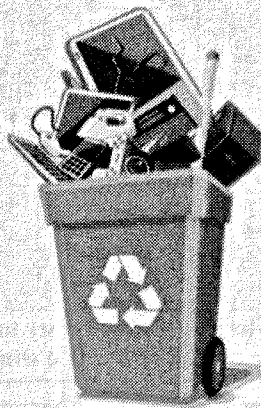
Rockcastle County Fiscal Court is accepting Statements of Qualifications for the preliminary planning, scope and cost estimate, design, and construction services for the Bloss Road Waterline Extension Project. The project consists of connecting to an existing Kentucky American Water waterline at Sand Springs Road. The project will extend approximately 2.1 miles of 4" waterline to provide drinking water service to 10 households currently without access along the length of Bloss Road in Rockcastle County. It is anticipated that the project will be funded through Cleaner Water Program funds.

To be considered, proposals must be received by 12:00PM local time on October 15, 2024. Two (2) copies of the proposal will be required. Submissions should be sealed and clearly labeled Bloss Road Waterline Extension Project. Rockcastle County Fiscal Court reserves the right to reject any or all proposals. All Proposals should be addressed to: County of Rockcastle, c/o Howell Holbrook, 205 E. Main St. Mt. Vernon KY 40456/PO Box 755 Mt. Vernon, KY 40456, email: holbrookhh@windstream.net; phone: (606) 256-2856. Proposals received after the deadline on October 15, 2024, at 12:00PM CST will not be considered.

For a copy of the full Request for Qualifications including scoring criteria, please contact Judge Executive Howell Holbrook at holbrookhh@windstream.net or by phone at (606) 256-2856. Questions concerning this Request for Qualifications should be addressed to: County of Rockcastle, c/o Howell Holbrook, 205 E. Main St. Mt. Vernon KY 40456/PO Box 755 Mt. Vernon, KY 40456, email: holbrookhh@windstream.net; phone: (606) 256-2856. Proposals All questions should be submitted in writing no less than 5 days prior to the date for receipt of statements of qualifications.

Rockcastle County Fiscal Court will adhere to the provisions of Title VI of the Civil Rights Act of 1964, and Section 3 in the implementation of this project. No person shall be excluded from participation in, denied benefits of, or subjected to discrimination in the implementation of this program on the grounds of race/ethnicity, color, religion, disability, national origin, sex, familial status, gender identity, or sexual orientation. Attention is particularly called to the requirements as to conditions of employment to be observed under the contract, Section 3, Segregated Facilities, Section 109, Title VI, E.O. 11246, the Anti-Kickback Act and Section 504 requirements.

Rockcastle Co. residents have been invited to participate in this event....



Garrard County Electronics Recycling Drop-off Day

Saturday, October 19
9:00 – 4:00

Soil and Water Conservation Office
166 Precision Court, Lancaster

Discarded electronics contain hazardous substances that can leach into soil and water sources, polluting ecosystems and posing risks to human health. Be conservation-minded and bring your items in for FREE recycling.

This event is open to all households and small businesses

Items that will be accepted

| | | |
|---|-----------------|-------------------|
| Televisions and monitors: flat screen or old-fashioned tube | | |
| Computers: desktop, laptop, tablet (for example, iPad) | | |
| Computer hardware: scanner, printer, keyboard, mouse, router, modem | | |
| Office equipment: copiers, fax machines, electric typewriters | | |
| Telephones: cell phone and landline, answering machines | | |
| Small appliances, including microwaves ovens | | |
| Other electronic devices: | | |
| iPods, MP3 players | Radios | Wire |
| Stereos, speakers | Digital cameras | GPS devices |
| CD, VCR, DVD players | Pagers | Lithium batteries |
| Headphones | Calculators | Motors |

Items NOT accepted

| | |
|--|---|
| Smoke detectors | Lead-acid batteries, alkaline batteries |
| Large appliances (refrigerators, etc.) | Light bulbs: incandescent, fluorescent, LED |

This event is brought to you by the Garrard County Soil and Water Conservation District in partnership with Tech Recyclers. Questions? Call the Conservation Office at (859) 792-2620

SPORTS

Rock remains undefeated with 14-0 win over Clay

By: Chad Hensley
A bitter rivalry between a pair of sour opponents led to the Rockcastle County Rockets football rejoicing in the sweet taste of a shut-out victory (14-0) over Clay County for the best start to a season since 2011.
Rockcastle (6-0, 1-0) may not have put up its best offensive showing of the season, but in a true team sport, all three facets of the game including offense, defense and special teams did just enough to pick up a critical win to open district play.
Hurricane Helene devastated many throughout the southeastern portion of the country, but the damaging winds and torrential rains had subsided enough by Friday morning that officials from both schools decided to continue with the contest.
“We knew we would play,” stated RCHS head coach Chris Larkey. “The weather was worse on Thursday night and early Friday morning. The radar showed a break in the weather on Friday evening, and as it happened, it never rained. It would have been hard to reschedule a district game, but we would have played Saturday if needed. It turned out to be a beautiful night for football. It was a hard-fought game by both teams and our defense rose to the occasion to help seal the win.”
It was that very defensive unit Larkey praised that helped get the Rockets on the scoreboard first, just moments into the game.
The Rockets would not

budge on the opening drive of the contest and squashed chance the Tigers (4-1, 0-1) of gaining a first down.
With Clay County lined up to punt, sophomore Blake Mullins broke through the interior front of the Tigers and blocked the punt. Fellow sophomore Hunter Pingleton was “Johnny On The Spot” and scooped up the ball after it rattled around for a moment and raced his way into the endzone from 42 yards out.
Benjamin Brenda’s extra point was good, and the Rockets led 7-0 with 10:11 left in the first quarter.
“We take pride in trying to block punts, and I would say if there was a stat in the state, we would lead in blocked punts this year,” spoke Larkey about his punt block team. “Blake Mullins and Jacob Camel both come with a relentless rush and if they don’t get it then they set the stage for someone else to get it. It turned out to be the game winner. It was funny because the ball Blake blocked bounced to him off his helmet to Hunter Pingleton who scored the touchdown. That proved to be all we needed. It really motivated our kids on defense.”
While it is unknown if the Rockets lead the state in blocked punts as that is not a statistic that the KHSAA keeps, Rockcastle is leading the state, regardless of classification, in defensive sacks with 30 after the win over Clay County.
In Class 3A, the Rockets have distanced them-

selves from second place Marion County, who has 18 sacks, and lead Class 6A’s Bullitt East for first overall by a 30 to 26.5 count.
Senior outside linebacker Creed Gabbard notched the only two sacks of the night to give himself eight on the season, which is the individual top spot in Class 3A and good enough for fifth in the entire state.
Clay County came into the game with a much different look from the passing-first mentality of the last few years, but the Rockets were ready for a strong rushing presence. The Tigers would end up running into a stone wall over and over and over again.
The Rockcastle County defensive unit was impressive throughout claimed a total of 15 tackles for loss on the night.
The offense would need every bit that effort the defense could give as Clay County was just as up to the task as Rockcastle County was.
The score remained 7-0 until the second quarter when Isaiah Jackson scored the game’s only offensive touchdown on a fiver yard rush. It was Jackson’s 11th rushing touchdown of the season.
Praise should also go to sophomore athlete Xavier Leger, who had a spectacular punt return deep inside Clay County territory that helped set up touchdown that was subsequently followed by a Brenda extra point.
“We really worked the clock right before half,” Larkey stated. “When Clay had to punt, the

touchdown was set up by Xavier Leger and his great punt return. It took us two plays to score on a cutback by Isaiah Jackson to put us up 14-0 at half. We took the momentum in with us at half. Our defense played lights out that drive, pinning Clay back and forcing the punt.”
That 14-0 halftime lead would eventually prove to be the final score as the Rockets put out any happy feelings the Tigers were hoping to have on their own homecoming night.
Pingleton once again led the defensive unit in tackles with 15 (10 solo and five assisted) as well as forcing a fumble, recovered two fumbles, scored on one of the fumble recoveries and had a tackle for loss.
Carter Powell had another brilliant came to compliment Pingleton. Powell finished the night with eight tackles including three for loss.
Connor Wright is having a great season from his defensive back position to earn seven tackles including two for negative yardage.
Gabbard’s two sacks did vault himself into first place in that category in Class 3A, but he also added six tackles with four being for a loss of yardage.
Jaydon Bowles and Heath Barnes added five tackles each while Leger chipped in four, Jackson, Mullins and Austin Miles had three each and Caden Lovell earned two tackles.
Barnes contributed three tackles for loss while Bowles and Mullins had one apiece and Lovell had a fumble recovery.
Clay County was limited to just 127 yards of total offense on just 45 plays from scrimmage.
“I have the best defensive coach and coaches in the state in my opinion,” Larkey boasted defensive coordinator Josh Martin as well as defensive coaches Chayse McClure and Michael Brummett. “Our defensive coaches and players take pride in having a great defense.

That is what Rockcastle has always been known for. We all know what wins championships. Our defense is one of the fastest I have been around, the old saying ‘speed kills’ is very true.”
Offensively, Rockcastle was limited to just 31 plays due to the time of possession Clay County had throughout the game.
Of those 31 plays, Jackson carried the ball 16 times for 79 yards and one touchdown.
Powell had seven carries for 29 yards while Lovell had four carries for 11 yards. Leger and Mullins had one carry each to round out the offensive presence.
It may not have been much of an offensive output, but it was just enough to get the all important win. This week, however, all phases of their game will have to be firing at all times as the Rockets welcome in Dudley Hilton and his boys, the Bell County Bobcats.
Bell County has just reloaded as their offense has maintained the strong rushing attack by plugging another talented running back into their system.

Number 22, Kaleb Miller, leads Class 3A in rushing and is fourth overall with 986 yards on 156 carries in six games.
Last season, the Rockets went to Log Mountain and checked out of the Hilton Hotel with a 40-38 victory, but the Bobcats were able to utilize the flawed RPI system to have a better route in the playoffs to which they made it all the way to Commonwealth Stadium and finished as Class 3A runner-up to Christian Academy of Louisville 41-16.
“Bell Co. is going to be a very tough game,” Larkey added about the Bobcats. “Offensively, we have struggled in maintaining drives and scoring the last two weeks. Our defense has kept us in the games. We have to score this week to keep Bell guessing and keep them off the field. They are going to be very tough. They do a great job obviously as usual running the ball, their quarterback does a very good job throwing it. If we can pull off the win, it helps even more with winning the district.”

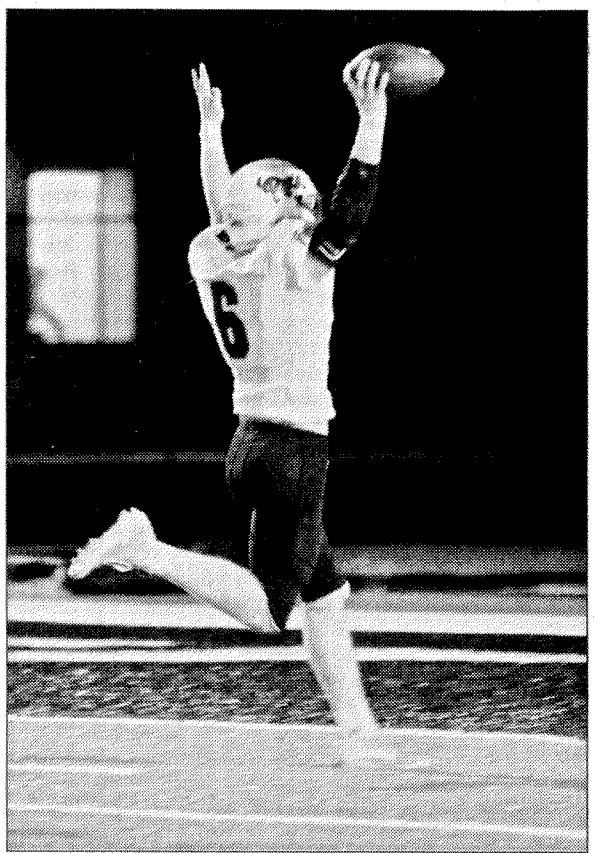
(Cont. to pg. 7)



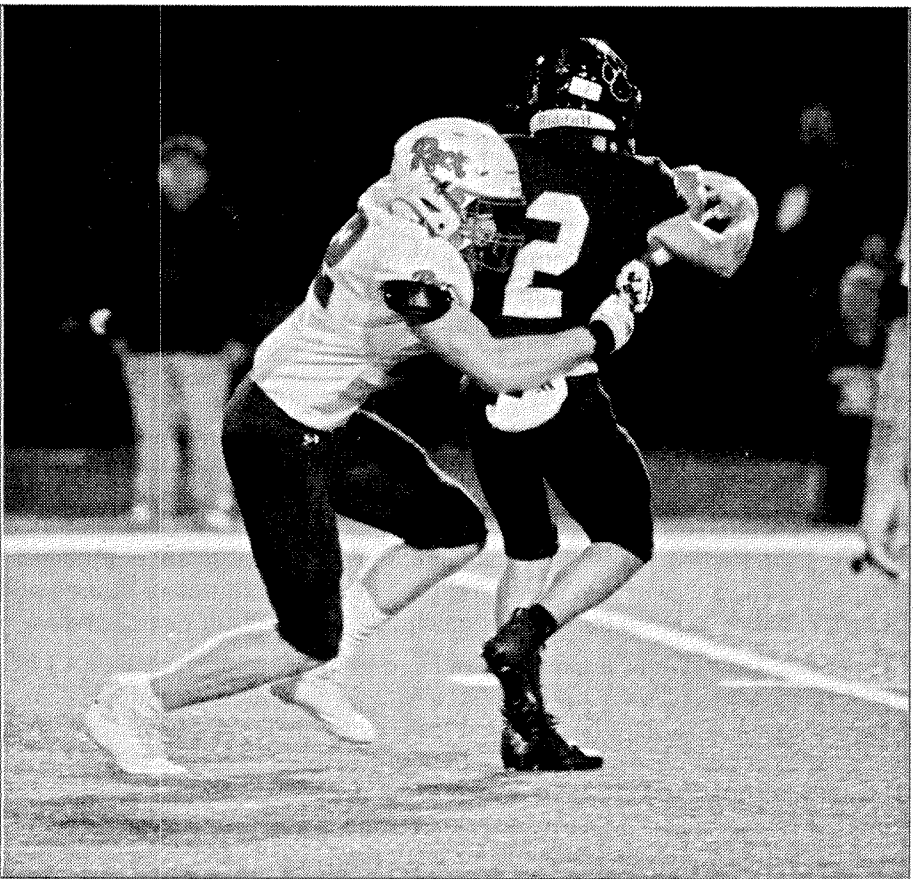
Isaiah Jackson fights for yardage in the Rockets’ 14-0 win over Clay County to remain undefeated at 6-0. Jackson had 79 yards and one touchdown in the win.



Xavier Leger and Caden Lovell make a tackle in the Rockets’ 14-0 win over Clay County Friday night. The Rockets will host Bell County this Friday night in a big district matchup. Game time is set for 7:30.



Hunter Pingleton goes in for a 42 yard touchdown after recovering a blocked punt by Blake Mullins. The touchdown was the first of the night for the Rockets in a very low-scoring affair. Defensively, Pingleton had 15 tackles, 10 solo and five assists and one tackle for a loss.



Creed Gabbard picks up one of his two quarterback sacks during the Rockets’ win over Clay County Friday night. Gabbard had six tackles on the night, four for losses.



The RCHS Marching Rockets recently competed in the Pulaski County Invitational. The Rockets qualified for finals and placed second in their class. Members are shown above, front row from left Abby Todd, Caylin Noe, Evee Warrick, James Perkins, Moira Neely, William Schultz, Kaylee Johnson, Shealyn Smith and Eli Chasteen. Middle row from left: Hannah Atkinson, Bailey Adams, Lizzie Tritt, Shelby Sandusky, Jaylen Smith, Kaylee Neal, Jassmine Alcorn, Kendra Barnes, Madison Shuart, Haylee Miller, Caleb Kendall, William Henson, Henry Joyner, Macensie Strunk, James Coldiron and Emily Forman. Back row from left: Caleb Saylor, Susanne Mullins, Levi Lovell, Connor Lindo, Julissa Alcorn, Christian Kimsey, Zakk Lawrence, Lacie Laws, Hunter Payne, Sophia Lovell and Emmett Lutes. Shown at left are seniors Lacie Laws, Caleb Saylor, Haylee Miller, Jaylen Smith and Talyn Barnes during the trophy presentation.

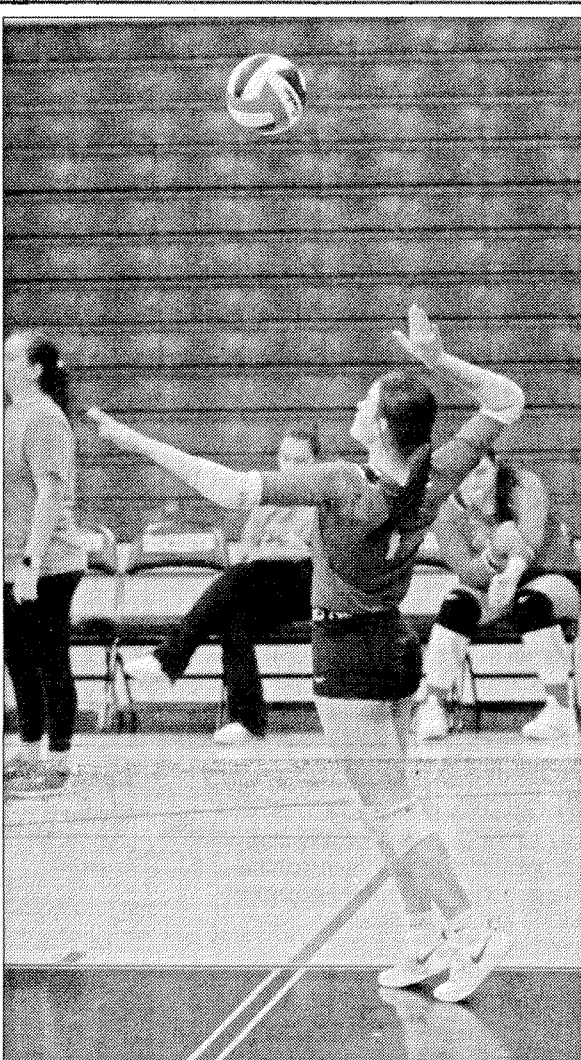
“Rockets”

(Cont. from pg. 6)

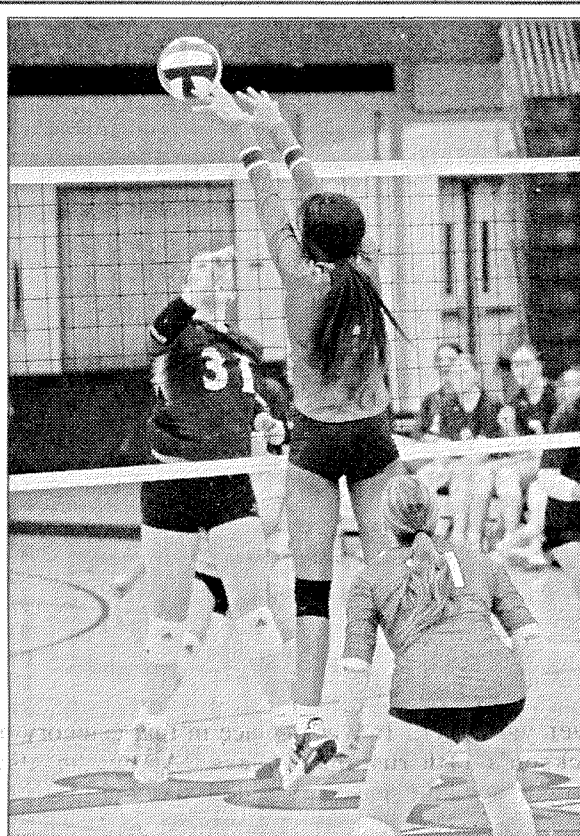
The contest will also mark the end of an era as it will be the final home game the Rockets play on natural grass. As part of the construction of the new Rockcastle County Middle School, the school system is also adding in a turf facility that will be home to the multiple football teams throughout the age divisions as well as the new girls' soccer team, which is in its inaugural season this year.

Many memories have been carved into the heads of the Rocket faithful that are sure to turn out in droves on Friday night and this year's team is hoping to add one more exciting notch to that memory bank.

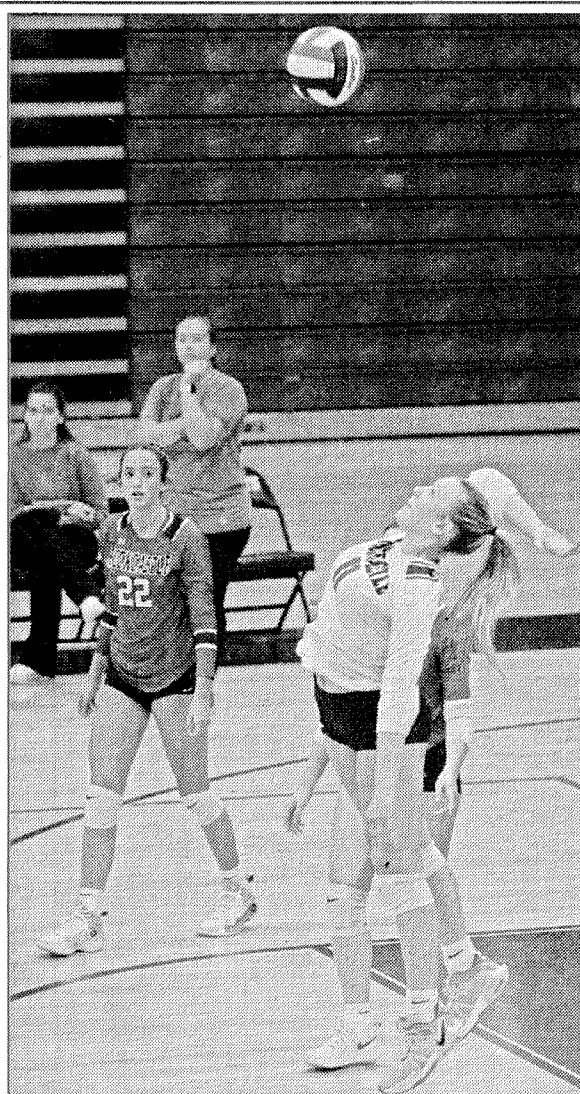
"We just hope to go out and represent our county and school with great pride," Larked stated when asked about his team playing on the grass facility for the final time. "It's something we preach each day."




Brilie Bussell puts up a serve during the Rockets' loss to district foe Pulaski County last week. The Rockets lost 25-22, 25-18, 19-25 and 25-16. Bussell had three service aces, 11 digs and three kills for the Rockets.



Aisha Njie goes for a block during the Rockets' loss to Pulaski County last week. Njie had 10 kills and two digs for the Rockets. Also shown is teammate Addy King. King had 12 kills and 15 digs in the loss.



Hannah King goes for one of her two kills during the Rockets' loss to district foe Pulaski County last week. Kiing also had one assist and 23 digs for the Rockets. The Rockets next action is October 12th at home when they face Wayne County at 10 a.m. and Trinity Christian at noon.

KING'S 
EYE CARE

Dr. Sarah King
Dr. Kevin Skidmore
Dr. Ashley Lane
Dr. Gary King
Dr. Taylor Waggoner

—Optometrists—

854 Ridgewood Dr. • Berea, KY 40403
www.eyedoctorberea.net
859-986-7027

The Friday Night
Gospel Singing
Proudly Presents!

Lonnie & Edith

Free Admission

October 4th @ 6pm
9174 Main Street Livingston

[illegible]

UNITED STATES POSTAL SERVICE® (All Periodicals Publications Except Requester Publications)

Statement of Ownership, Management, and Circulation

1. Publication Title: **Mount Vernon Signal**

2. Issue Frequency: **Weekly**

3. Issue Date: **3/6/16**

4. Annual Subscription Price: **9-30-24**

5. Number of Issues Published Annually: **51**

6. Annual Circulation: **36,000 in County 10,000 in VA 26,000 in-state 10,000 in foreign**

7. Complete Mailing Address of Known Office of Publication (Not printer) (Street, city, county, state, and ZIP+4®):
**115 Main St.
Mount Vernon, Ky. 40456**

8. Complete Mailing Address of Headquarters or General Business Office of Publisher (Not printer):
**115 Main St.
Mount Vernon, Ky. 40456**

9. Full Names and Complete Mailing Addresses of Publisher, Editor, and Managing Editor (Do not leave blank):
Publisher (Name and complete mailing address):
**Berlina Anderkin
115 Main St.
Mt. Vernon, Ky. 40456**
Editor (Name and complete mailing address):
**Mike French
115 Main St.
Mt. Vernon, Ky. 40456**
Managing Editor (Name and complete mailing address):
**Berlina Anderkin
115 Main St.
Mt. Vernon, Ky. 40456**

10. Owner (Do not leave blank. If the publication is owned by a corporation, give the name and address of the corporation immediately followed by the names and addresses of all stockholders owning or holding 1 percent or more of the total amount of stock. If not owned by a corporation, give the names and addresses of the individual owners. If owned by a partnership or other unincorporated firm, give its name and address as well as those of each individual owner. If the publication is published by a nonprofit corporation, give its name and address.)
**160 Lovell Lane
Mt. Vernon, Ky. 40456
150 Hickory Hollow Dr.
Mt. Vernon, Ky. 40456**

11. Known Bondholders, Mortgagees, and Other Security Holders Owning or Holding 1 Percent or More of Total Amount of Bonds, Mortgages, or Other Securities. If none, check box ☒ None

12. Tax Status (For completion by nonprofit organizations authorized to mail at nonprofit rates):
a. Has Changed During Preceding 12 Months (Indicate with explanation of change with this date) ☐ None
b. Has Not Changed During Preceding 12 Months (Indicate with explanation of change with this date) ☐ None

13. Publication Title: **Mount Vernon Signal**

14. Issue Date for Circulation Data Below: **9-26-24**

15. Extent and Nature of Circulation

a. Total Number of Copies (Net press run) **4,300**

b. Paid Circulation (By Mail and Outside the Mail)

| | Net Press Run | Net Press Run |
|---|---------------|---------------|
| 1. Mail Outside Country Paid Subscriptions (Based on PS Form 3841 include paid circulation above national rate, advertiser's proof copies, and exchange copies) | 519 | 515 |
| 2. Mail In-Country Paid Subscriptions (Based on PS Form 3841 include paid circulation above national rate, advertiser's proof copies, and exchange copies) | 961 | 963 |
| 3. Paid Distribution Outside the Mail including Sales Through Dealers and Carriers, Street Vendors, Counter Sales, and Other Paid Distribution Outside USPS® | 2,500 | 2,500 |
| 4. Paid Distribution by Other Classes of Mail through the USPS® (e.g., First-Class Mail®) | 0 | 0 |
| Total Paid Distribution (Sum of 15b (1), (2), (3), and (4)) | 3,980 | 3,978 |

c. Free or Nominal Rate Distribution (By Mail and Outside the Mail)

| | Net Press Run | Net Press Run |
|--|---------------|---------------|
| 1. Free or Nominal Rate Outside-Country Copies (Based on PS Form 3841) | 0 | 0 |
| 2. Free or Nominal Rate In-Country Copies (Based on PS Form 3841) | 0 | 0 |
| 3. Free or Nominal Rate Copies Mailed at Other Classes through the USPS® (e.g., First-Class Mail®) | 0 | 0 |
| 4. Free or Nominal Rate Distribution Outside the Mail (Carriers or other means) | 0 | 0 |
| Total Free or Nominal Rate Distribution (Sum of 15c (1), (2), (3), and (4)) | 0 | 0 |

d. Total Free or Nominal Rate Distribution (Sum of 15b (1), (2), (3), and (4)) **0**

e. Total Distribution (Sum of 15b and 15d) **4,055**

f. Copies not Distributed (Place instructions in Publication #4 (page 43)) **100**

g. Total (Sum of 15e and 15f) **4,155**

h. Percent Paid (15e divided by 15f times 100) **96.63**

16. Electronic Copy Circulation

| | Average No. Copies Each Issue During Preceding 12 Months | No. Copies of Single Issue Published Nearest to Filing Date |
|---|--|---|
| a. Paid Electronic Copies | 0 | 0 |
| b. Total Paid Print Copies (Line 15b) + Paid Electronic Copies (Line 16a) | 0 | 0 |
| c. Total Paid Distribution (Line 15b) + Paid Electronic Copies (Line 16a) | 0 | 0 |
| d. Percent Paid (16b Print + 16c Electronic) (16b divided by 16c x 100) | 0 | 0 |

i. I certify that 80% of all my electronic targeted (electronic and print) are paid above a national price.

17. Publication of Statement of Ownership: ☒ Publication is a general publication, publication of this statement is required. Will be printed in the **10-3-24** issue of the publication. ☐ Publication not required.

18. Signature and Title of Editor, Publisher, Business Manager, or Owner: **Berlina Anderkin** Date: **9-30-24**

I certify that all information furnished on this form is true and complete. I understand that anyone who furnishes false or misleading information on this form or who omits material or information requested on the form may be subject to criminal sanctions (including fines and imprisonment) and/or civil sanctions.

Yards to Paradise

By Max Phelps
Traversing Your
Troubling Terrain—
Accessing Your Outdoor
Spaces

Do you have steep slopes, gullies, rocky or soggy areas, big roots of a tree, or other things that hinder the full use of your property in ways you'd like to utilize it? Let's give a mention to several possible solutions for some of these problem areas we may have. Then perhaps we will do a whole article on the more interesting options in the future.

You may desire a leisurely path for strolling, or one to move carts, wheelbarrows, or make a spot accessible via a walker or a motor-

ized chair. You may find landscaping, or even just climbing a steep bank to be problematic. Perhaps storm runoff from uphill causes problems that need solving. A terribly rocky spot may be where you'd like a path, or walk. Another problem looking for an good solution: a lovely tree you really desire to keep and not do anything that might cause it to die—but it's roots are in your way—and you're both afraid of stumbling and of damaging the tree with constant traffic or paving or even fill dirt.

Maybe you'd like to have a path go through an area that gets boggy or even has a spring

trickling water or oozing into a little pond in wet seasons. Maybe you'd like to re-direct runoff from a heavy rain.

Might a retaining wall and steps remove the steep grade issue? Could burying a tile or pipe send storm runoff another direction? Could a little bridge across a gully or swale be the solution for crossing uneven terrain? How about a boardwalk...a wooden path built on stubs or pilings to get over the rocky or perpetually damp area, or the protruding tree roots?

Walks are often built of concrete, and this is a sturdy solution, especially on flat and gently rolling spaces. Pea gravels or even chipped wood can be a simple

and economical option to strolling from point A to point B. In days gone by when rural folks might walk several miles to school or church, traveling the same route often resulted in a well-worn dirt path. Since this applies to few or none of you reading this, that thought can stand or fall by itself.

Stone steps, big timbers, large stepping stones are some additional means to getting over and through lumpy and uneven terrain. Stairs of boulders, stairs of mortared stone, stairs of treated timbers set into the bank, and stairs and decking over the rough and difficult spots in the landscape or forested area could be the solution you seek

for access to more of your property.

Safety railings in some situations may be a requirement, or at least desirable. Depending on the age and agility of your family and anyone else likely to be using your steps, bridges, stairs, boardwalks, stepping rocks, we should think through our projects before building something we might have to rip out or drastically alter at a later time.

Cost of materials and ease of access to the areas you may desire to improve can also be factors in the choices you should make. If lots of nice rocks happen to be plentiful on your hilly or rough spot...using things you find can save a bundle

of greenbacks in many cases. Also, remember wood rots eventually, and shady damp areas can be slick and result in falls, and then there's critters and falling limbs and places leaves may perpetually congregate. So, again, think your project through before commencing haphazardly.

Any of these subjects could be turned into a complete article. It could happen sooner than later. Feedback often gets a topic discussed another day if there is interest. May some of the thoughts in this story motivate you to get busy making your place into a little paradise.

The author is a landscaper. Email: rockcastles@gmail.com

SAMPLE BALLOT
PAGE 1 OF 2

PURSUANT TO KRS 424.290, "MATTERS REQUIRED TO BE PUBLISHED," THE FOLLOWING RACES WILL APPEAR ON THE VOTING MACHINES AND PAPER BALLOTS ALL PRECINCTS LISTED IN ROCKCASTLE COUNTY FOR THE GENERAL ELECTION, NOVEMBER 5, 2024.

| Straight Party | | UNITED STATES REPRESENTATIVE in CONGRESS 5th Congressional District (Vote for one) | CONSTITUTIONAL AMENDMENT CONSTITUTIONAL AMENDMENT 1 |
|---|---|--|---|
| <input type="radio"/> | Republican Party | <input type="radio"/> Hal ROGERS Republican Party | Are you in favor of amending Sections 145 and 155 of the Constitution of Kentucky to prohibit persons who are not citizens of the United States from being allowed to vote in the Commonwealth of Kentucky, as stated below? IT IS PROPOSED THAT SECTION 145 OF THE CONSTITUTION OF KENTUCKY BE AMENDED TO READ AS FOLLOWS: Every citizen of the United States of the age of eighteen years who has resided in the state one year, and in the county six months, and the precinct in which he or she offers to vote sixty days next preceding the election, shall be a voter in said precinct and not elsewhere. No person who is not a citizen of the United States shall be allowed to vote in this state. The following persons also shall not have the right to vote: 1. Persons convicted in any court of competent jurisdiction of treason, or felony, or bribery in an election, or of such high misdemeanor as the General Assembly may declare shall operate as an exclusion from the right of suffrage, but persons hereby excluded may be restored to their civil rights by executive pardon. 2. Persons who, at the time of the election, are in confinement under the judgment of a court for some penal offense. 3. Idiots and insane persons. IT IS PROPOSED THAT SECTION 155 OF THE CONSTITUTION OF KENTUCKY BE AMENDED TO READ AS FOLLOWS: The provisions of Sections 145 to 154, inclusive, shall not apply to the election of school trustees and other common school district elections. Said elections shall be regulated by the General Assembly, except as otherwise provided in this Constitution. No person who is not a citizen of the United States shall be allowed to vote in said elections. |
| <input type="radio"/> | Democratic Party | <input type="radio"/> | |
| <input type="radio"/> | Kentucky Party | Write-in | |
| <input type="radio"/> | Libertarian Party | | |
| PRESIDENT and VICE PRESIDENT of the UNITED STATES (Vote for one) | | STATE SENATOR 21st Senatorial District (Vote for one) | CONSTITUTIONAL AMENDMENT 2 To give parents choices in educational opportunities for their children, are you in favor of enabling the General Assembly to provide financial support for the education costs of students in kindergarten through 12th grade who are outside the system of common (public) schools by amending the Constitution of Kentucky as stated below? IT IS PROPOSED THAT A NEW SECTION BE ADDED TO THE CONSTITUTION OF KENTUCKY TO READ AS FOLLOWS: The General Assembly may provide financial support for the education of students outside the system of common schools. The General Assembly may exercise this authority by law, Sections 59, 60, 171, 183, 184, 186, and 189 of this Constitution notwithstanding. <input type="radio"/> Yes <input type="radio"/> No |
| <input type="radio"/> | Donald J. TRUMP J. D. VANCE Republican Party | <input type="radio"/> Brandon J. STORM Republican Party | |
| <input type="radio"/> | Kamala D. HARRIS Tim WALZ Democratic Party | Write-in | |
| <input type="radio"/> | Jill STEIN Samson KPADENOU Kentucky Party | STATE REPRESENTATIVE 71st Representative District (Vote for one) | |
| <input type="radio"/> | Robert F. KENNEDY JR. Nicole SHANAHAN Independent | <input type="radio"/> Josh BRAY Republican Party | |
| <input type="radio"/> | Shiva AYYADURAI Crystal ELLIS Independent | <input type="radio"/> Rachele RIDDLE Democratic Party | |
| <input type="radio"/> | Chase OLIVER Mike TER MAAT Libertarian Party | Write-in | |
| <input type="radio"/> | Write-in | COMMONWEALTH'S ATTORNEY 28th Judicial Circuit (Vote for one) | |
| <input type="radio"/> | | <input type="radio"/> David L. DALTON Republican Party | |
| <input type="radio"/> | | Write-in | |
| <input type="radio"/> | | CIRCUIT COURT CLERK (Vote for one) | |
| <input type="radio"/> | | <input type="radio"/> Eliza Jane YORK-HANSEL Republican Party | |
| <input type="radio"/> | | Write-in | |
| <input type="radio"/> | | Write-in | |

ALL PRECINCTS



The Family of **Geraldine Robbins**
invites you to help us celebrate her
95th Birthday - Saturday October 5
from 5-7pm (cake at 6pm)
Kentucky Music Hall of Fame
2590 Richmond St. | Mt. Vernon, KY 40456
Your presence is present enough!
Join us and celebrate this wonderful woman!



205 East Main Street, Box 6
Mt. Vernon, KY 40456

Danetta Ford Allen
Rockcastle County Clerk

Phone (606) 256-2831
Fax (606) 256-4302

Call our office today to
get your copy of the
Mount Vernon Signal
in the mail
every week.
Call 606-256-2244

| IMPORTANT ELECTION DATES TO KNOW FOR ROCKCASTLE CO. | | | |
|---|---------|------------------|----------------------------------|
| | OCTOBER | | Site/Location |
| Last Day to Register to VOTE | 7th | 4:00 PM | govote.ky.gov |
| Regular Meeting of CBOE | 8th | 3:30 PM | Courthouse |
| L&A Testing CBOE/Vendor | 10th | 4:00 PM | Courthouse |
| Precinct Officer Training | 19th | 10:00 AM | Courthouse |
| Ballot Processing | 21st | 4:00 PM | Courthouse |
| Precinct Officer Training | 21st | 6:00 PM | Courthouse |
| Absentee Portal Closes | 21st | 4:00 PM | govote.ky.gov |
| CBOE Machine Examination | 21st | 6:00 PM | Conclusion of PEO Training |
| Early Voting | 31st | 10:00 AM-6:00 PM | Courthouse |
| NOVEMBER | | | |
| Early Voting | 1st | 6:00 AM-2:00 PM | Courthouse |
| Early Voting | 2nd | 8:00 AM-4:00 PM | Courthouse |
| Ballot Processing | 2nd | 10:00 AM | Courthouse |
| ELECTION DAY | 5th | 6:00 AM-6:00 PM | BES, RES, MVES, LVFD, Courthouse |
| Vote Certification | 8th | By NOON | Courthouse |
| Regular Meeting of CBOE | 12th | 3:30 PM | Courthouse |
| DECEMBER | | | |
| Regular Meeting of CBOE | 10th | 3:30 PM | Courthouse |

SAMPLE BALLOT
PAGE 2 OF 2

NONPARTISAN CITY BALLOT

CITY COUNCIL
CITY OF MT. VERNON
(Vote for up to six candidates)

☐ David
BALES

☐ Gertha
MINK

☐ Shelley Raines
LEWIS

☐ Charles "Chuck"
SHIELDS

☐ Kenneth Blaine
COLLINS

☐ Chandler
HUNTER

☐ Michael
VANWINKLE

☐ Lonetta
DAUGHERTY

☐ Vincent Ray
TOWNSEND

☐ Julie Dowell
ASHER

☐ Wayne
BULLOCK

☐

Write-in

☐

Write-in

☐

Write-in

☐

Write-in

QUESTION

MEDICINAL CANNABIS - City of Mount Vernon

Are you in favor of the sale of medicinal cannabis at a licensed dispensary and the operation of other cannabis businesses in the city of Mount Vernon?

☐ Yes

☐ No

A102 North Mt. Vernon CITY
B101 South Mt. Vernon CITY
B102 West Mt. Vernon CITY
E101 East Mt. Vernon CITY

NONPARTISAN CITY BALLOT

CITY COUNCIL
CITY OF BRODHEAD
(Vote for up to four candidates)

☐ Harold
TAYLOR

☐ Brian
BULLOCK

☐ Bryanna
MULLINS

☐ Teddy
ROSE

☐

Write-in

☐

Write-in

☐

Write-in

☐

Write-in

A101 North Brodhead CITY

NONPARTISAN CITY BALLOT

MAYOR
CITY OF LIVINGSTON
(Vote for one)

☐ Lawrence A.
THAYER JR.

☐ Sandi
SINGLETON

☐

Write-in

CITY COMMISSIONERS
CITY OF LIVINGSTON
(Vote for up to four candidates)

☐ Troy
GOFORTH

☐ Robert Greg
CARPENTER

☐ Jerry
GROSS

☐ Jeffrey
CARPENTER

☐

Write-in

E103 East Livingston CITY
E 105 West Livingston CITY

SCHOOL CANDIDATES

MEMBER OF BOARD OF EDUCATION
Division 2
(Vote for one)

☐ Angela
PARSONS-WOODS

☐

Write-in

A101 North Brodhead CITY
A101 North Brodhead NOCITY
C101 Brown STANDARD
C102 West Brodhead STANDARD

SCHOOL CANDIDATES

MEMBER OF BOARD OF EDUCATION
Division 4
(Vote for one)

☐ Lisa
CORNETT

☐

Write-in

D103 Climax STANDARD
D 102 Orlando STANDARD

SCHOOL CANDIDATES

MEMBER OF BOARD OF EDUCATION
Division 5
(Vote for one)

☐ Matthew
CHALIFF

☐

Write-in

D101 Conway STANDARD
D102 Roundstone STANDARD
E101 East Mt. Vernon CITY
E104 Wildie STANDARD



ORDINANCE 24-09-23

INTENT AND DESIRE TO ANNEX

ANNEXATION NOTICE: ATTENTION PROPERTY OWNERS

Pursuant to KRS 83A.060, KRS424.120, and all other applicable law, please take notice that the City of Brodhead is hereby informing the owner(s) of the real property contained in the area proposed to be annexed by the City of Brodhead, said property being portions of right-of-way US HWY 150, state Plane coordinates of N=2019870.17, E=2029220.42, and more particularly described in the Ordinance Number 24-07-08E, a complete copy which is available in print upon request in the City clerk's Office. Said owner(s) has the right to present a valid petition to the City of Brodhead's Mayor to have the issue of annexation placed upon a ballot. Such a petition must be filed within 60 (sixty) days from the publication date of the "Intent to annex" ordinance regarding said property. A valid petition under KRS requires either 50% of the resident voters, or 50% of the landowners, to file a petition with the Mayor to have the issue placed on a ballot of the next regular election. If no proper, bona fide petition is presented to the Mayor as stated herein and according to applicable law within the 60 days noted, per KRS and all other applicable law the City of Brodhead may enact an Annexation Ordinance annexing the subject property. To the best of the City's knowledge, the property is exclusively Kentucky Highway department (KYDOT) owned right-of-way/ territory, all in Rockcastle County, Kentucky, and all of which are present city corporate limits.

AN ORDINANCE TO THE CITY OF BRODHEAD, KENTUCKY, SETTING FOR THE City's intent and desire to annex a corridor of highway.

The intent and desire to annex contains descriptions in the above listed notice and a full description upon request at City Clerk's Office exhibit 24-07-08E, : being on the southern edge of the City of Brodhead Annexation Limits, being on the Western edge of right-of-way of US HWY 150: being approximately 295 ft southwest of the intersection of centerlines of US HWY 150 and KY HWY 1250

NOW, THEREFORE, BE IT ORDAINED BY THE CITY OF BRODHEAD, THE INTENT AND DESIRE TO ANNEX ABOVE LISTED DESCRIPTION STATED IN ABOVE ANNEXATION NOTICE

THE ABOVE LISTED INTENET AND DESIRE TO ANNEX ORDINANE SHALL COME INTO EFFECT UPON PASSAGE AND PUBLICATION BY LAW

First Read: 9.23.24
Second Read: 9.30.24
Approved: Jerry Wayne Adams Mayor, City of Brodhead
Attest: Clerk

Ordinance Description
City of Brodhead Annexation Ordinance No. 24-07-08 E

- BEGINNING at a point said point:
- Being on the southern edge of the City of Brodhead Annexation Limits (Ordinance no. 19-52)
 - Being on the western edge of right-of-way of US HWY 150
 - Having KY State Plane (South Zone – NAD 83) coordinates of N=2019870.17, E=2029220.42
 - Being approximately 295 feet southwest of the intersection of centerlines of US HWY 150 and KY HWY 1250
 - Lying in Rockcastle County, Kentucky and being the POINT OF BEGINNING for this description;

Thence leaving said point and with the southwestern right-of-way line of US HWY 150 the following twenty-three (23) courses:

- L1 - S 00°06'55" W- 244.92 FEET to a point,
- L2 - S 15°00'58" E - 297.03 FEET to a point,
- L3 - S 23°31'46" E - 431.52 FEET to a point,
- L4 - S 05°16'16" E - 278.30 FEET to a point,
- L5 - S 15°37'43" E - 412.73 FEET to a point,
- L6 - S 22°55'01" E - 774.76 FEET to a point,
- L7 - S 17°02'03" E - 479.65 FEET to a point,
- L8 - S 77°21'29" E - 169.49 FEET to a point,
- L9 - S 36°33'54" E - 720.01 FEET to a point,
- L10 - S 42°36'24" E - 499.89 FEET to a point,
- L11 - S 48°07'26" E - 620.29 FEET to a point,
- L12 - S 37°14'20" E - 218.36 FEET to a point,
- L13 - S 77°19'35" E - 244.13 FEET to a point,
- L14 - S 56°26'18" E - 577.35 FEET to a point,
- L15 - S 72°45'25" E - 1611.69 FEET to a point,
- L16 - N 89°05'07" E - 714.16 FEET to a 3" aluminum disk, right-of-way monument found,
- L17 - S 83°09'41" E - 952.67 FEET to a point,
- L18 - N 04°51'36" E - 47.83 FEET to a 3" aluminum disk, right-of-way monument found,
- L19 - S 82°52'35" E - 157.48 FEET to a point,
- L20 - S 83°30'49" E - 139.79 FEET to a point,
- L21 - S 83°03'20" E - 139.56 FEET to a point,
- L22 - S 82°38'37" E - 84.24 FEET to a point, and
- L23 - S 83°33'18" E - 432.16 FEET to a 3" aluminum disk, right-of-way monument found on the southern right-of-way line of US HWY 150 and the eastern right-of-way of KY HWY 2108;

Thence crossing the right-of-way of US HWY 150,
L24 - N 00°51'33" E - 340.80 FEET to a 3" aluminum disk, right-of-way monument found on the northern right-of-way of US HWY 150 and the eastern right-of-way of KY HWY 2108;

Thence with the northern right-of-way of US HWY 150 the following fifteen (15) courses:
L25 - N 68°37'12" W - 213.79 FEET to a 3" aluminum disk right-of-way monument found,
L26 - N 83°29'50" W - 390.04 FEET to a point,

- L27 - S 80°32'07" W - 346.81 FEET to a point,
- L28 - N 87°27'06" W - 724.84 FEET to a point,
- L29 - N 77°34'21" W - 729.31 FEET to a point,
- L30 - N 81°54'19" W - 887.01 FEET to a point,
- L31 - N 77°38'31" W - 487.11 FEET to a point,
- L32 - N 55°55'56" W - 872.35 FEET to a point,
- L33 - N 69°56'32" W - 422.14 FEET to a point,
- L34 - N 47°57'46" W - 874.43 FEET to a point,
- L35 - N 36°32'16" W - 1014.33 FEET to a point,
- L36 - N 17°18'09" E - 238.61 FEET to a point,
- L37 - N 54°21'34" W - 168.68 FEET to a point,
- L38 - N 47°53'02" W - 238.60 FEET to a point, and
- L39 - N 15°02'20" W - 2176.49 FEET to a point on the southern edge of the City Limits of Brodhead (Ordinance #19-52);

Thence crossing the right-of-way of US HWY 150 with southern line of the City Limits of Brodhead,
L40 - S 75°38'10" W - 340.00 FEET to the POINT OF BEGINNING and containing 81.118 acres.

This ordinance description created from a combination of field survey work, recreation of highway plans, and the commonsense reconciliation of the two by AGE Engineering Services, Inc. All bearings are based on grid north of the Kentucky State Plane Coordinate System South Zone – NAD83.

David King
PROFESSIONAL LAND SURVEYOR

Motion to approve 1st reading Ordinance No 24-07-08E Annexation

1st read 9.30.24
2nd read

Final read:

Jerry Wayne Adams Mayor
Attest

ORDINANCE 24-09-23A

INTENT AND DESIRE TO ANNEX

ANNEXATION NOTICE: ATTENTION PROPERTY OWNERS

Pursuant to KRS 83A.060, KRS 424.120, and all other applicable law, please take notice that the City of Brodhead is hereby informing the owners(s) of the real property contained in the area proposed to be annexed by the City of Brodhead, said property being portion of the right-of-way of KY old US HWY 150 and KY HWY 150, being on the western edge of the original City of Brodhead Annexation Limits, being on the northern right-of-way line of old US HWY 150, Having KY State Plane coordinates of N=2034192.48, E=2024792.09, and more particularly described in the Ordinance Number 24-07-08W, a complete copy which is available in print upon request in the City Clerks's Office. Said owner(s) has the right to present a valid petition to the City of Brodhead's Mayor to have the issue of annexation placed upon a ballot. Such a petition must be filed within 60 (sixty) days from the publication date of the "intent to annex" ordinance regarding said property. A valid petition under KRS requires either 50% of the resident voters, or 50% of the landowners, to file a petition with the Mayor to have the issue placed on a ballot of the next regular election. If no proper, bona fide petition is presented to the Mayor as stated herein and according to applicable law within the 60 days noted, per KRS and all other applicable law the City of Brodhead may enact an Annexation Ordinance annexing the subject property. To the best of the City's knowledge, the property is exclusively Kentucky Highway Department (KYDOT) owned right-of-way/territory, all in Rockcastle County, Kentucky, and all of which are contiguous to present city corporate limits.

AN ORDINANCE TO THE CITY OF BRODHEAD, KENTUCKY, SETTING FOR THE CITY'S INTENT AND DESIRE TO ANNEX A CORRIDOR OF HIGHWAY.

The intent and desire to annex contains descriptions in the above listed notice and a full description upon request at City Clerk's Office exhibit 24-07-08W, : being on the western edge of the original City of Brodhead Annexation Limits; being on the northern right-of-way line of old US HWY 150; being approximately 3,450 ft southeast of the intersection of centerlines of US HWY 150 and old US HWY 150

NOW, THEREFORE BE IT ORDAINED BY THE CITY OF BRODHEAD, THE INTENT AND DESIRE TO ANNEX ABOVE LISTED DESCRIPTION STATED IN ABOVE ANNEXATION NOTICE

THE ABOVE LISTED INTENT AND DESIRE TO ANNEX ORDINANCE SHALL COME INTO EFFECT UPON PASSAVE AND PUBLICATION BY LAW.

First Read: 9.23.24
Second Read: 9.30.24
Approved: Jerry Wayne Adams Mayor, City of Brodhead
Attest: Clerk

Ordinance Description
City of Brodhead Annexation Ordinance No. 24-07-08 W

- BEGINNING at point said point:
- Being on the western edge of the original City of Brodhead Annexation Limits
 - Being on the northern right-of-way line of old US HWY 150
 - Having KY State Plane (South Zone – NAD 83) coordinates of N=2034192.48, E=2024792.09
 - Being approximately 3,450 feet southeast of the intersection of centerlines of US HWY 150 and old US HWY 150
 - Lying in Rockcastle County, Kentucky and being the POINT OF BEGINNING for this description;

Thence leaving said point and with the northern right-of-way line of old US HWY 150 the following nine (9) courses:

- C1 - With a curve to the left having a radius of 1995.00 and a chord bearing and distance of N 84°48'03" W- 433.69 FEET to a point,
- L1 - S 89°07'53" W - 75.02 FEET to a point,
- C2 - With a curve to the left having a radius of 1525.00 and a chord bearing and distance of S 83°52'50" W - 279.12 FEET to a point,
- L2 - S 78°37'47" W - 211.40 FEET to a point,
- C3 - With a curve to the right having a radius of 645.00 and a chord bearing and distance of N 79°34'04" W - 479.12 FEET to a point,
- L3 - N 57°45'55" W - 1243.94 FEET to a point,
- L4 - N 57°33'44" W - 113.00 FEET to a point,
- L5 - N 57°21'44" W - 42.50 FEET to a point, and
- L6 - N 57°35'42" W - 47.60 FEET to a point, said point being the intersection of right-of-way of old US HWY 150 and old US HWY 150 connector right-of-way;

Thence leaving the right-of-way of old US HWY 150 and with the right-of-way of old US HWY 150 connector the following five (5) courses:

- L7 - N 36°45'56" W - 73.64 FEET to a point,
- L8 - N 46°00'05" W - 336.49 FEET to a point,
- L9 - N 87°31'00" W - 183.07 FEET to a point,
- L10 - S 81°05'13" W - 91.41 FEET to a 3" aluminum disk, right-of-way monument found, and
- L11 - S 38°59'13" W - 158.03 FEET to a point on the northeastern right-of-way of US HWY 150;

Thence crossing the right-of-way of US HWY 150,
L12 - S 39°20'15" W - 374.04 FEET to a point on the southwestern right-of-way of US HWY 150;

Thence with the southwestern right-of-way of US HWY 150 the following twenty-seven (27) courses:
L13 - S 09°23'41" E - 168.55 FEET to a point,
L14 - S 68°11'31" E - 97.76 FEET to a point,
L15 - N 64°08'06" E - 49.89 FEET to a point,
L16 - S 42°03'45" E - 129.42 FEET to a point,
L17 - S 37°01'51" E - 1416.07 FEET to a point,
L18 - S 34°22'07" E - 310.00 FEET to a point,
L19 - S 2°39'56" E - 104.95 FEET to a point,

Cancer t-shirts available now at MVFD

The Mount Vernon Fire Department is currently selling cancer awareness t-shirts through October with all proceeds going to the Rockcastle County Cancer Assistance Fund.

The sale is part of an ongoing effort for cancer awareness and cancer treatment for the Mount Vernon Fire Department.

The shirts have a logo with the typical cancer ribbon made of a fire hose with the words "Hope, Faith, Courage and Strength under the Mount Vernon Fire Department." The shirt also says "Because we care."

Short sleeves are \$15 while long sleeves are \$20. For credit cards, add \$1 to the cost.

Anyone interested may see any Mount Vernon Fire Department firefighter or call 606-256-4332.

You may also send a message on Facebook at Facebook.com/MVFD1 or text Adam Bales at 606-392-8175 or email at abales@911fleet.com.

New Military mental health and depression prevention group

The Rockcastle County Military Mental Health and Depression Prevention Coalition is now beginning to hold monthly meetings in Mount Vernon.

According to organizers, the goal of the coalition is set to raise awareness of mental health and depression prevention within the veteran population and the Rockcastle County community as a whole.

The group is expected to begin a monthly coffee muster, which would provide volunteers with information, data and ideas to help in the prevention of depression or mental health issues, beginning October 8, from 10 to 11 a.m. on the second floor of the Rockcastle County Courthouse.

Current plans include holding the coffee muster each second Tuesday of the month.

Local volunteers will provide coffee and donuts at the event

Ordinances
Continued from page 10

L20 - S 64°08'52" E - 110.27 FEET to a point,
L21 - S 34°26'10" E - 284.90 FEET to a 3" aluminum disk, right-of-way monument found,
L22 - S 28°42'06" E - 291.15 FEET to a point,
L23 - S 37°37'13" E - 431.00 FEET to a point,
L24 - S 23°19'29" E - 335.38 FEET to a point,
L25 - S 35°51'38" E - 770.51 FEET to a point,
L26 - S 07°34'33" E - 250.43 FEET to a point,
L27 - S 27°37'14" E - 95.52 FEET to a point,
L28 - N 89°57'26" E - 153.64 FEET to a point,
L29 - S 50°19'43" E - 93.95 FEET to a point,
L30 - S 24°10'02" E - 334.52 FEET to a point,
L31 - S 31°32'49" E - 275.15 FEET to a point,
L32 - S 35°35'35" E - 875.43 FEET to a point,
L33 - S 07°33'15" E - 261.60 FEET to a point,
L34 - S 25°17'35" E - 276.90 FEET to a point,
L35 - S 34°37'34" E - 296.02 FEET to a point,
L36 - S 50°29'16" E - 344.79 FEET to a point,
L37 - N 56°22'14" E - 64.99 FEET to a point,
L38 - S 25°21'13" E - 555.73 FEET to a point, and
L39 - S 55°07'41" E - 231.07 FEET to a point on the northern edge of the City Limits of Brodhead (Annexation Ordinance #19-52);

Thence crossing the right-of-way of US HWY 150 with the northern line of the City Limits of Brodhead (Annexation Ordinance #19-52) the following two (2) courses:
L40 - N 51°22'27" E - 245.93 FEET to a point, and
L41 - N 54°43'23" E - 2.11 FEET to a point, said point being on the eastern right-of-way line of US HWY 150;

Thence leaving the line of the City of Brodhead (Annexation Ordinance #19-52) and with the northeastern edge of right-of-way of US HWY 150 the following twenty-two (22) courses:
L42 - N 34°51'37" W - 38.85 FEET to a 3" aluminum disk, right-of-way monument found,
L43 - N 32°10'54" W - 554.81 FEET to a point,
L44 - N 47°39'56" W - 123.68 FEET to a point,
L45 - N 29°58'38" W - 941.82 FEET to a point,
L46 - N 13°49'50" W - 265.68 FEET to a point,
L47 - N 50°19'43" W - 365.37 FEET to a point,
L48 - N 30°03'11" W - 400.74 FEET to a point,
L49 - N 34°24'13" W - 370.00 FEET to a point,
L50 - N 38°21'13" W - 242.81 FEET to a point,
L51 - N 32°42'48" W - 938.02 FEET to a point,
L52 - N 28°22'01" W - 381.57 FEET to a point,
L53 - N 52°03'52" W - 284.58 FEET to a point,
L54 - N 33°50'03" W - 279.97 FEET to a point,
L55 - N 08°47'31" W - 192.82 FEET to a point,
L56 - N 42°59'16" W - 552.28 FEET to a 3" aluminum disk, right-of-way monument found,
L57 - N 09°26'50" W - 219.23 FEET to a point,
L58 - N 69°23'00" W - 154.01 FEET to a point,
L59 - N 20°29'10" W - 202.28 FEET to a point,

L60 - N 33°48'45" W - 1184.65 FEET to a point,
L61 - N 81°03'57" W - 70.91 FEET to a point,
L62 - N 36°25'13" W - 100.47 FEET to a point, and
L63 - N 27°14'40" W - 298.14 FEET to a point, said point being on the southern edge of right-of-way of old US HWY 150 connector;
Thence with the southern edge of right-of-way of old US HWY 150 connector the following four (4) courses:
L64 - N 40°33'20" E - 77.20 FEET to a point,
L65 - S 59°45'04" E - 82.26 FEET to a 3" aluminum disk, right-of-way monument found,
L66 - N 32°45'10" E - 109.64 FEET to a point, and
L67 - S 74°21'23" E - 302.71 FEET to a point, said point being the intersection of right-of-way of old US HWY 150 connector and old US HWY right-of-way;
Thence leaving US HWY 150 connector right-of-way and with old US HWY 150 right-of-way the following eight (8) courses:
L68 - S 57°21'44" E - 26.85 FEET to a point,
L69 - S 57°33'44" E - 113.18 FEET to a point,
L70 - S 57°45'55" E - 1244.03 FEET to a point,
C4 - With a curve to the left having a radius of 695.00 and a chord bearing and distance of S 79°34'04" E - 516.26 FEET to a point,
L71 - N 78°37'47" E - 211.40 FEET to a point,
C5 - With a curve to the right having a radius of 1475.00 and a chord bearing and distance of N 83°52'50" E - 269.97 FEET to a point,
L72 - N 89°07'53" E - 75.13 FEET to a point,
C6 - With a curve to the right having a radius of 1945.00 and a chord bearing and distance of S 84°59'15" E - 410.29 FEET to a point on the edge of the original City of Brodhead City Limits;
Thence with the original City Limits of Brodhead,
C4 - with a curve to the right having a radius of 3960.00, an arc length of 51.61 and a chord bearing and distance of N 25°36'49" E - 51.61 FEET to the to the POINT OF BEGINNING and containing 69.014 acres.

This ordinance description created from a combination of field survey work, recreation of highway plans, and the commonsense reconciliation of the two by AGE Engineering Services, Inc. All bearings are based on grid north of the Kentucky State Plane Coordinate System South Zone - NAD83.

David L. King, Jr.
LTS. SURVEYOR

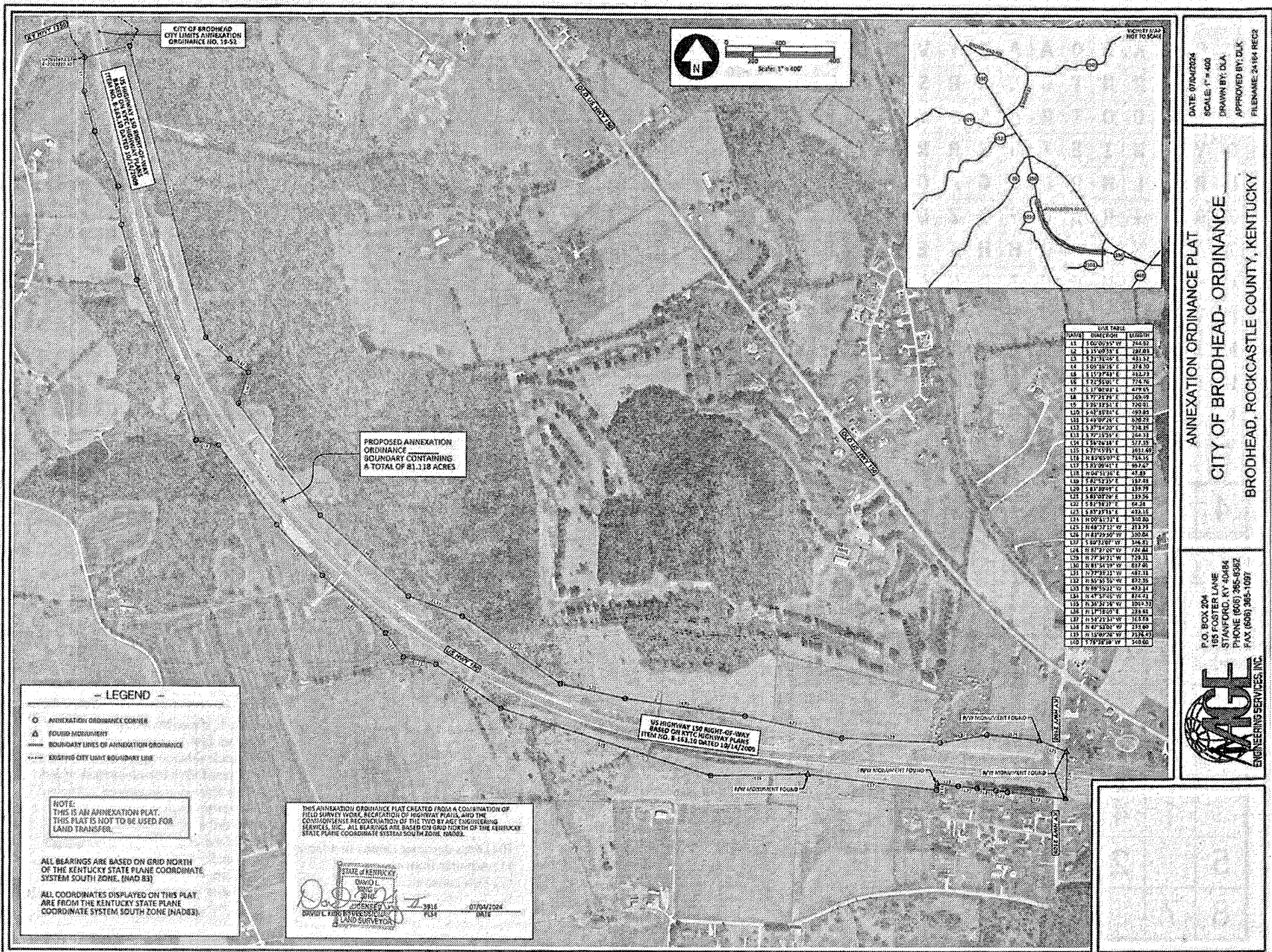
Motion to approve 1st reading Ordinance No 24-07-08W Annexation

1st read 4-30-24

2nd read

Final read:

Jerry Wayne Adams Mayor
Attest



DAR offering multiple student scholarships

Each year the National Society Daughters of the American Revolution (DAR) awards multiple scholarships to students showing dedication to the pursuit of higher education in diverse areas of study including history, economics, law, political science, medicine, nursing, occupational and physical therapy, elementary and secondary education, chemistry, math, science and English. Applicants must be citizens of the United States. Applicants must attend or plan to attend an accredited college or university in

the United States. All multi-year scholarships, typically renewable up to four years, must be for consecutive years of attendance. Awards are based on academic excellence, commitment to the field of study, and/or financial need, or other restrictions on specific scholarships. Awards are placed on deposit with the recipient's college or university and any unused portion shall be returned to the DAR. Applicants are only eligible to receive one national scholarship from the DAR Scholarship Committee.

DAR is pleased to announce all students applying for scholarships offered by the DAR Scholarship Committee will submit their applications using the online application portal below. Emailed or mailed applications will no longer be accepted, unless applying for the Margaret Howard Hamilton Scholarship. The scholarship application portal will reopen for the coming academic year from November 1, 2024 through January 31, 2025 at 11:59 pm (Hawaii Time). <https://academicworks.com>

Questions about national scholarships on the application portal should be directed to scholarships@nsdar.org. The Kentucky Society Daughters of the American Revolution offers one \$1,000 scholarship each year for a graduating high school senior who has pursued a well-rounded curriculum and been involved in various school

and community activities. Applicant must complete the application including his/her curriculum, as well as student and civic activities, hobbies and interests. A transcript of grades, showing a 3.0 or above on a 4.0 system. A 500-word composition, indicating his/her career objectives and major goal in life. The Rockcastle Chapter NSDAR Regent

must include a recommendation letter endorsing the application. All applications need to be given to a high school counselor who will in turn submit to the DAR chapter. Deadline to submit application to the chapter is December 1, 2024. For further information please contact your school counselor or rockcastledar@gmail.com

Mamaw's Kitchen

By Regina Hoskins

WHITE CHOCOLATE MACADAMIA NUT COOKIES
1 cup butter, softened
3/4 cup packed light brown sugar
1/2 cup white sugar
2 large eggs
1/2 teaspoon vanilla extract
1/2 teaspoon almond extract
2 1/2 cups all-purpose flour
1 teaspoon baking soda
1/2 teaspoon salt
1 cup coarsely chopped macadamia nuts
1 cup coarsely chopped white chocolate
Preheat the oven to 350 degrees). Beat butter, brown sugar, and white sugar together in a large bowl with an electric mixer until light and fluffy. Beat in eggs one at a time, then stir in vanilla and almond extracts. Combine flour, baking soda, and salt in another bowl. Gradually stir flour mixture into butter mixture, fold in macadamia nuts and white chocolate.

Drop spoonfuls of dough 2 inches apart onto ungreased cookie sheets. Bake in the preheated oven until golden brown, about 10 minutes.
WHITE CHOCOLATE CARAMEL CASHEW CLUSTERS
2 and 1/2 cups cashew halves
8 ounces white chocolate, coarsely chopped
sea salt for sprinkling
EASY CARAMEL
30 caramel squares, unwrapped (I like Kraft caramels)
1/3 cup heavy cream
Line two large baking sheets with parchment paper or silicone baking mats. Arrange 35 clusters of cashews each with 1-2 inches between them. Use about 11-12 cashew halves per cluster. Set a couple extra cashews aside if you have any. You can crush them up to sprinkle on top of the clusters in step 4.
Place the caramels in a medium microwave-safe bowl. Pour cream on top

and microwave for 3 minutes total, stopping and stirring every 20 seconds. It's a lot of stirring, but it's imperative to prevent the caramels from scorching. If the caramel seems too thick after 3 minutes, stir in 1-2 more Tablespoons of cream. Spoon 2 teaspoons of caramel onto the center of each cluster. Set aside as you melt the chocolate. Melt the chocolate in the microwave or use a double boiler. If using the microwave, place chocolate in a medium microwave-safe bowl and microwave for 1-2 minutes, stopping and stirring every 20 seconds until completely melted and smooth. Spoon melted chocolate on top of each cluster, then top each with any crushed cashews (from step 2) and a sprinkle of sea salt. Allow the chocolate to completely set in the refrigerator for 30 minutes before enjoying. Store leftover clusters in the refrigerator.

New business



The Rockcastle Therapy Associates ribbon cutting ceremony was held on September 6th. Shown above from left are Mayor Tim Roberts, April Bussell - Occupational Therapist, Dana Carrera, owner and LPCC-S, Chelsie Hasty - LPCC and Chris McGuire - Clinical Counseling Intern. Rockcastle Therapy Associates, owned by Mount Vernon native, Dana Carrera, is a new healthcare office offering mental health services, occupational therapy, community support and targeted case management. Offering professional counseling and occupational therapy services in one location allows us to help individuals focus on functional independence skills and techniques for living a life with intention and joy. Owners say "Our mission is to provide client and family-centered services to promote independence, safety and well-being across the lifespan. We strive to help our clients develop skills and strategies to conquer daily challenges, recover from trauma, injury or life-altering conditions, and to be a resource to maintain progress and keep moving in the right direction toward a life of quality and meaning." The new business is located at 310 Richmond Street Mount Vernon, KY. Phone (606)-256-3332. Fax (606)-256-3334.

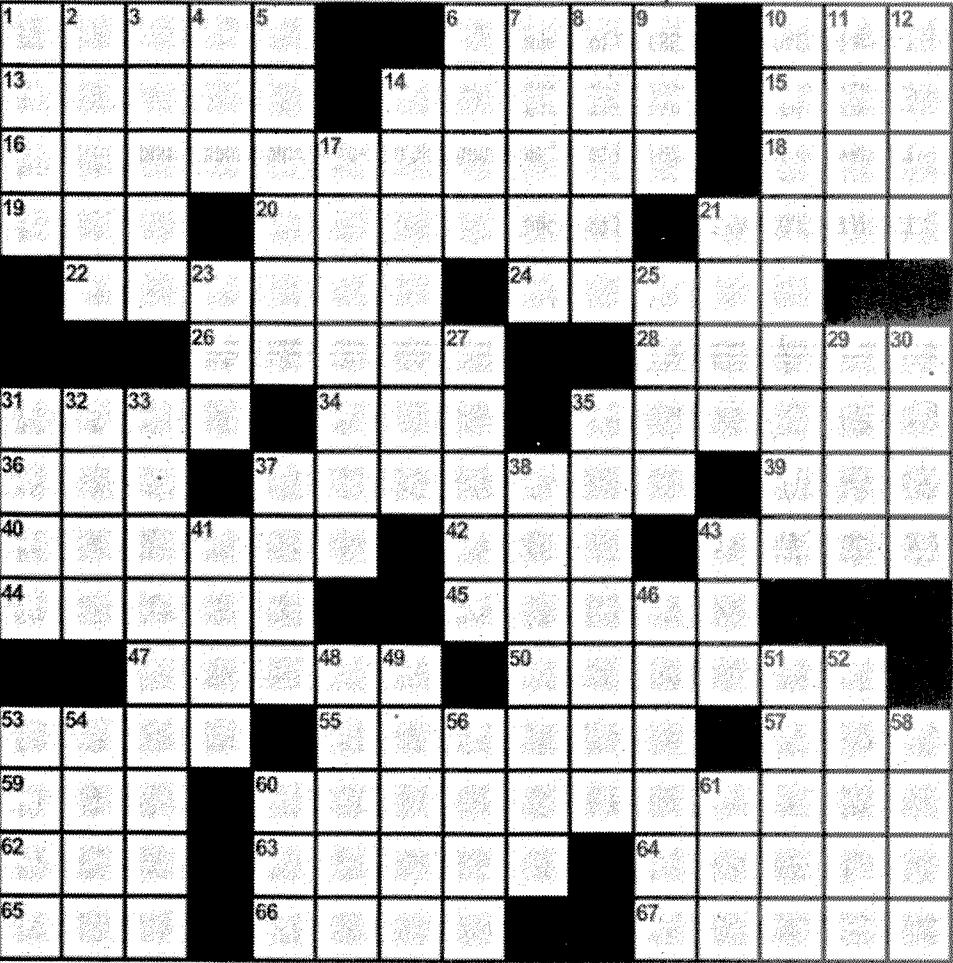
Sugar Mountain Trading Co.
Kentucky Hand Crafted Soap

40 Church St.
Mount Vernon Ky. 40456
(606) 256-3333
sugarmountaintrading.com

Visit us online and use Promo Code:
newspaper for 20% Off your order.
Bring a completed puzzle into our shop for 25% Off!

SUGAR'S PUZZLE PAGE

EURE-KAI!



ACROSS

- 1) Hinge holder
- 6) Clock feature
- 10) "Brainiac" author Jennings
- 13) Crockett's last stand
- 14) Volunteer's cry
- 15) Senate vote
- 16) Barbarian who creates a buzz?
- 18) Matti Gras king
- 19) B'way "no seats" sign
- 20) Chest part
- 21) Lyricist Lorenz
- 22) Wipes clean
- 24) Matt of "The Martian"
- 26) Greenish-blue shades
- 28) Very quickly
- 31) Tool with teeth
- 34) "Good Will Hunting" sch.
- 35) Sci-fi master Isaac
- 36) Lawyers' org.
- 37) Waiting uncomplainingly
- 39) Mined asset
- 40) Loss caused by a pothole strike
- 42) Phone no. adjunct
- 43) Hawaiian strings
- 44) Waited in line, say
- 45) Tread heavily
- 47) Welles who played Kane

- 50) Difficult burdens
- 53) Private employer
- 55) Ghastly
- 57) P on a frat pin
- 59) "Chocolate" dog, for short
- 60) Worthless stock contract?
- 62) Swelled head
- 63) Grueling exams
- 64) Hurricane of 2011
- 65) Kinsey research topic
- 66) Truth or ___ (party game)
- 67) Slackens off

DOWN

- 1) Fifth Avenue retailer
- 2) Author ___ Boothe Luce
- 3) Barbering tool
- 4) Comedian Philips
- 5) Like a pine fragrance
- 6) Shorthand similar to "IMO"
- 7) Prepared to shoot
- 8) Barton of the Red Cross
- 9) Right angle
- 10) Dress designer Donna in a frenzy?
- 11) Admirer from afar, maybe
- 12) Deli counter call
- 14) Ticked off

- 17) Walking tour carry-along
- 21) Pueblo tribe
- 23) Super serve
- 25) Crow's nest support
- 27) Farm enclosures
- 29) Apple throwaway
- 30) Times to revel
- 31) Cheers from the grandstands
- 32) Border on
- 33) Crate of exploding cigars?
- 35) "The Four Seasons" composer Vivaldi
- 37) Elbow guards
- 38) Shakes down
- 41) "Glee" actor Monteith
- 43) Favorable times
- 46) Rich, chocolaty dessert
- 48) Tara family name
- 49) Stock valuation phrase
- 51) Great Lakes tribe members of old
- 52) Performed brilliantly
- 53) Brewpub offerings
- 54) Word after "road" or "roid"
- 56) Be the king
- 58) Vending machine inserts
- 60) Dropped for a 10-count, for short
- 61) "La-la" lead-in

Harry Potter

| | | | | | | | | | | | | | |
|---|---|---|---|---|---|---|---|---|---|---|---|---|---|
| F | L | R | J | E | P | H | R | S | A | A | G | R | F |
| Q | R | C | K | E | O | A | A | T | Y | V | O | G | F |
| U | S | U | R | N | T | G | L | R | R | S | F | E | U |
| I | Y | G | O | O | T | R | B | A | D | E | S | H | P |
| D | Y | R | W | I | E | I | U | W | R | R | L | I | E |
| D | R | A | L | M | R | D | S | G | A | O | Y | P | L |
| I | R | N | I | R | D | B | F | O | Z | D | T | P | F |
| T | A | G | N | E | M | R | H | H | I | E | H | O | F |
| C | H | E | G | H | E | U | I | D | W | L | E | G | U |
| H | T | R | O | M | E | D | L | O | V | B | R | R | H |
| W | I | T | C | H | C | R | A | F | T | M | I | I | H |
| W | A | L | C | N | E | V | A | R | C | U | N | F | R |
| P | S | C | A | R | U | A | D | L | F | D | E | F | A |
| Y | T | R | G | R | Y | F | F | I | N | D | O | R | Q |

POTTER
VOLDEMORT
RAVENCLAW
HERMIONE
WIZARDRY
DUMBLEDORE
HIPPOGRIFF
GRYFFINDOR
SLYTHERIN
HARRY
QUIDDITCH
HUFFLEPUFF
GRANGER
ALBUS
SCAR
HAGRID
WITCHCRAFT
HOGWARTS
J.K. ROWLING

| | | | | | | | | |
|---|---|---|---|---|---|---|---|---|
| 4 | | 7 | | 9 | 1 | | 2 | 8 |
| | 9 | 8 | | 4 | | 5 | | |
| 6 | | | | | 5 | | | |
| 9 | | | 8 | | 2 | 1 | | |
| | | | | | 6 | 2 | 4 | 3 |
| 7 | 2 | | | | 4 | 9 | 8 | 6 |
| | 1 | 4 | | 6 | 8 | | | 2 |
| 5 | | 2 | | | | 8 | | |
| 8 | 7 | | | 2 | 3 | 6 | 1 | |

Classifieds

CLASSIFIED RATES

- Local Rates - \$5 for 25 words or less - .10 each additional word
 - Display Classifieds \$5.00/Inch
- Deadline for Classifieds is 4 p.m. Monday**

For Rent

Mt. Vernon Housing Authority open Monday, Wednesday and Friday from 9 a.m. to 3 p.m. Applications accepted Monday, 9 a.m. to 1 p.m. Rent based on income. 256-4185. 14xntf

Accepting Applications

For 2 and 3 bedroom units at Valley View Apartments. Rent based on income. Call 256-5912. TDD for hearing impaired only. 1-800-247-2510.

For Rent

Maple Street Storage of Brodhead
606-308-3032
606-392-8654

Property For Sale

30 Acre Stand of Timber. Sawmill nearby. Call 606-594-8990. 33xntf

Posted

Posted: No hunting or trespassing on the former Berl Hopkins' land (now belonging to Judy Hopkins Marsh) on KY 461 near US 150 and 461 intersection. 27x20p

Posted: No hunting or trespassing on farms, belonging to Gary and Peggy Roberts, on KY 3245. Violators will be prosecuted.

Posted: No hunting or trespassing on property belonging to Victor and Debbie Francisco located at 7194 South Wilderness Rd., Calloway. Violators will be prosecuted. 33x8p

Posted: No hunting or trespassing on all land belonging to Graves Heirs in Buffalo and Charles R. and Polly Abney in Renfro Valley. 33x3p

Posted: No trespassing for any reason on land belonging to Matthew Broadus and others on KY 3245 and Bryant Ridge Road. Violators will be prosecuted. 12(24)x52

Posted: No trespassing on property owned by Shannon Hellard on Cove Branch Road in Rockcastle County. All violators will be prosecuted. 8/17/23

Posted: Absolutely no trespassing on land belonging to LJJ Honeycomb LLC for any reason. Formerly known as Christ Outreach for the Blind. Violators will be prosecuted. 23(24)x51

Posted: No hunting or trespassing on property belonging to Brian and Angela Burdine and located at 428 Black Bear Lick Lane, Livingston. Violators will be prosecuted. 47xntf

Posted: No hunting or trespassing on land belonging to Orville and Bernice Burkhardt in Livingston and Mt. Vernon. **Anyone entering the properties must be with Orville Burkhardt.** Violators will be prosecuted. 35/23x51p

Posted: No hunting or trespassing on land belonging to Glen Roberts at 560 Dix River Branch Road, Brodhead. Violators will be prosecuted. 35xntf

Posted: Property belonging to Kitty Reese on Smallwood Road at Roundstone. All trespassers will be prosecuted. 49xntf

Posted: No hunting, trespassing or ATVs on land belonging to Jason and Sara Coguer at Roundstone. Not responsible for accidents.

Posted: No trespassing, hunting or fishing on land belonging to Rachel Denney on Hwy. 3245 (former Reggie Bengé property).

Posted: No trespassing on property known as C.B. Owens Farm across from Fairgrounds in Brodhead. Violators will be prosecuted. 25tfn

Yard Sales

3 Family Yard Sale: Across from Farm Bureau, Oct. 3rd, 4th and 5th. Something for everyone, cheap!

Yard Sale: Thursday, Friday, Saturday, October 3, 4, 5, 2024, 8:30 - 3:00 (Friday 5:00). Moving sale? If I don't sell this stuff, Marsha is making me move! Tools, furniture, household and collectible things. Great prices. 49 Magpie Lane, Mt. Vernon, out Rose Hill from the Old Brodhead Rd. Signs posted. Glen-Marsha Vanwinkle.

Yard Sale/Bake Sale
Faith Chapel Pentecostal Church will be having a yard sale/bake sale on October 5, 2024 at the Fellowship Hall from 9 a.m. to 2 p.m. Come on down and find some good sweet treats and some bargains at 2767 South Wilderness Road, Mt. Vernon. Pastor: Jack Carpenter. Asst. Pastor: Ronnie Spoonamore.

Notices

Notice is hereby given that Lonetta Daugherty, 335 Jerri Lane, Mount Vernon, KY 40456 and Valerie Dillingham, 1792 Brown Road, Mount Vernon, KY 40456 has been appointed co-executrixes of the estate of Lonnie E. Dillingham, deceased, on the 25th day of September 2024. Any person having claims against said estate shall present them, according to law, to the said Lonetta Daugherty and Valerie Dillingham or Hon. Jeremy B. Rowe, PO Box 1250, Mt. Vernon, KY 40456 on or before March 26, 2025 at 9:30 a.m. 33x3

Notice is hereby given that Kimberly Claire Castleberry, 2092 Brushy Ridge Road, Orlando, KY 40460 has been appointed Administratrix of the estate of William Castleberry, deceased, on the 25th day of September 2024. Any person having claims against said estate shall present

them, according to law, to the said Kimberly Claire Castleberry or Hon. Charlotte A. Nickerson, Nickerson Watts, PLLC, 148 South Main Street, Lawrenceburg, KY 40342 on or before March 26, 2025 at 9:30 a.m. 33x3

Notice is hereby given that Kenton Scott Parkey, 650 Capps Road, Campbells-ville, KY 42718 has been appointed Executor of the Estate of Marion Kenton Parkey, deceased, on the 19th day of September, 2024. Any person having claims against said estate shall present them, according to law, to the said Kenton Scott Parkey or Hon. John D. Ford, P.O. Box 247, Mt. Vernon, KY 40456 on or before March 19, 2025 at 9:30 a.m. 32x3

Cresthaven Cemetery Plots

Call Will Bishop @ 606-308-2490 or Shannon Bishop @ 606-308-9988

Professional Services

Clean Air - Spring into Savings!! AC Coil & Dryer Cleaning Combo - \$100. Water Heater Flush - \$80. Free estimates for general home maintenance. Call 606-392-8925. 3x8

Gravel Hauling and spreading. Call 606-308-1858 or 254-289-2913.

Owens Monument: Located behind Owens Funeral Home in Brodhead. Open Mon-Fri. 8 to 5 and Sat. 9 a.m. to noon. 606-758-9600. 14xntf

Classified Deadline is 4 p.m. Monday
Call 606-256-2244

Subscribe to the Mount Vernon Signal

In-County - \$30.00 • Out-of-County - \$35.00 • Out-of-State - \$40.00
Prices Per Year • 10% Discount to Senior Citizens

Name _____
Address _____
City _____
State _____ Zip _____
Please specify.....
New _____ Renewal _____

Mail to: Mt. Vernon Signal • PO Box 185
Mt. Vernon, KY 40456

Woodall's Tree Service

Fully Insured
25 Years Experience

Frankie Woodall
606-308-2382

Joanie Woodall
606-308-3190

BEE Garbage

256-2334

Weekly residential curbside pickup



\$23⁰⁰ per month with Curb Cart

Clifford Collins SEPTIC TANKS LLC

- Cisterns
- Farm Products
- Storm Shelters
- Retaining Walls

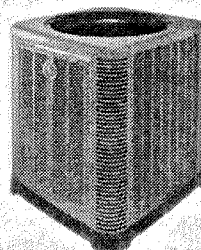
606-256-2535

Town & Country Garage

All Types of Mechanic Work

Call 606-386-0435

Upgrade your old heating and air with a new high efficiency heat pump from Rheem



Patrick Winstead
Owner
whac@yahoo.com

P.O. Box 330 Mt. Vernon, KY 40456

WVC
Residential & Light Commercial Heating & Cooling

606-308-4825

606-256-1038

Visa, Mastercard, Discover • HM04454

Bobby Kirby
606-308-3183

859-314-0609

BK Construction LLC

bobbykirby635@gmail.com

Roofing, Vinyl & 5" & 6" Seamless Gutters

Licensed & Insured

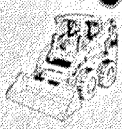
20yrs Experience

RADER'S EXCAVATING Inc.

Orlando, Ky.



Licensed & Insured



1-859-339-6254 or 1-606-256-3650

Heating & Air

Amana
LASTS AND LASTS AND LASTS

Goodman
Thank goodness for Goodman.

COMPLETE HOME COMFORT

Locally owned and Located at:

523 West St. • Brodhead, Ky.

Rodney Smith

758-0155 • 256-1683 • 859-661-5986

We service all Brands and Models • 20+ years experience

Free Estimates - Affordable Service - Call for Rates

Expert Installation & Troubleshooting • Friendly Hometown Service

Heat Pumps and Gas Furnaces

Fully Licensed and Insured HVAC and Electrical • MO-4808 and CE63779

David's Tire Center

24 Hr. Towing & Recovery LLC



Mechanic On Duty



Large selection of batteries and tires to help you get started in those cold winter months

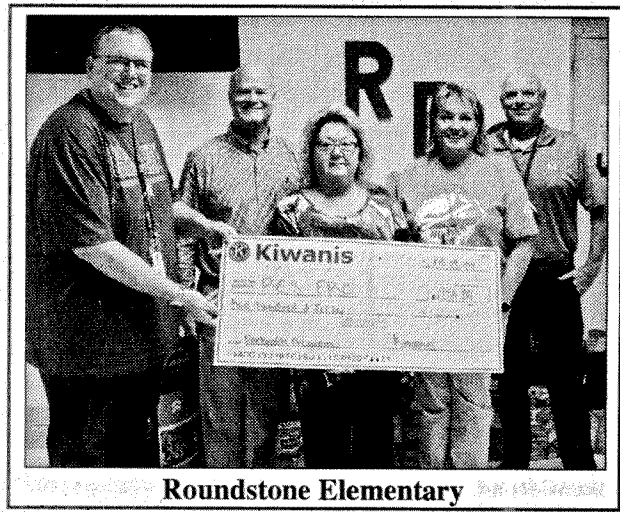
Also do muffler & exhaust work

1431 S. Wilderness Rd. (US 25) • Mt. Vernon

David & Josh Thompson, Owners
Office/24 Hr. Wrecker
606-256-4606

Save On All Major Brand Tires For Cars & Trucks
Farm Tractors • Lawn & More

Kiwanis donates \$1,250 to schools
Kiwanis of Rockcastle County has generously donated \$250 to each school in our district, benefiting the Family Resource and Youth Centers and their Backpack Snack Program, resulting in a total contribution of \$1,250 to support children in our community.



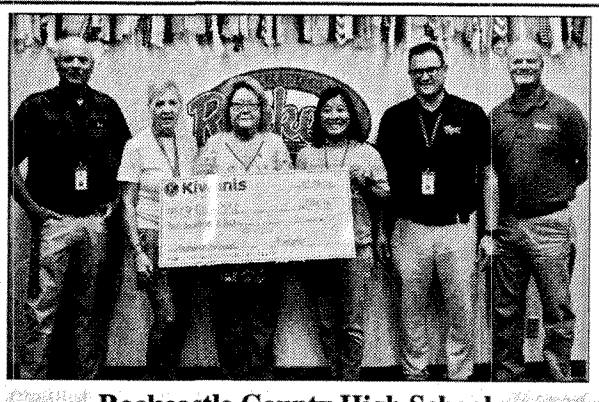
Roundstone Elementary



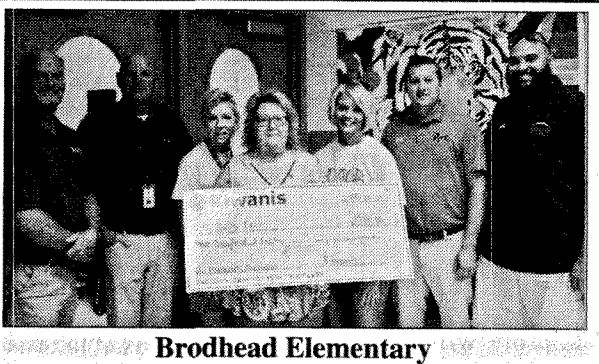
Mt. Vernon Elementary



Rockcastle County Middle School



Rockcastle County High School



Brodhead Elementary

Agricultural News

By: Lindsey New, FSA Director

Applying for Farm Storage Facility Loans

The Farm Service Agency's (FSA) Farm Storage Facility Loan (FSFL) program provides low-interest financing to help you build or upgrade storage facilities and to purchase portable (new or used) structures, equipment and storage and handling trucks.

Eligible commodities include corn, grain sorghum, rice, soybeans, oats, peanuts, wheat, barley, minor oilseeds harvested as whole grain, pulse crops (lentils, chickpeas and dry peas), hay, honey, renewable biomass, fruits, nuts and vegetables for cold storage facilities, floriculture, hops, maple sap, rye, milk, cheese, butter, yogurt, meat and poultry (unprocessed), eggs, and aquaculture (excluding systems that maintain live animals through uptake and discharge of water). Qualified facilities include grain bins, hay barns and cold storage facilities for eligible commodities.

Loans up to \$50,000 can be secured by a promissory note/ security agreement, loans between \$50,000 and \$100,000 may require additional security, and loans exceeding \$100,000 require additional security.

You do not need to demonstrate the lack of commercial credit availability to apply. The loans are designed to assist a diverse range of farming operations,

including small and mid-sized businesses, new farmers, operations supplying local food and farmers markets, non-traditional farm products, and underserved producers.

For more information, contact your Rockcastle County USDA Service Center at 606-256-2525 or visit fsa.usda.gov/pricesupport.

Committee Meeting Date: October 16th 2024 8:30 A.M. at the Mount Vernon USDA Service Center.

Important program dates and Interest Rates

Farm Operating Loans-Direct = 5.250%

Farm Ownership Loans-Direct= 5.500%

Limited Resource Loans= 5.00%

Farm Ownership Loans-Direct Down Payment= 1.500%

Emergency Loans= 3.750%

Farm Storage Loans=

3 yrs. =4.000%, 5 yrs.

=3.875%, 7 yrs.

=3.875% 10 yrs.

=4.000%, 12 yrs. =

4.125%

Commodity Loans=

5.625%

USDA is an equal opportunity provider,

employer and lender. To

file a complaint of discrimination, write:

USDA, Office of the Assistant Secretary for

Civil Rights, Office of Adjudication, 1400

Independence Ave., SW,

Washington, DC 20250-

9410 or call (866) 632-

9992 (Toll-free Customer Service), (800)

877-8339 (Local or Federal relay), (866)

377-8642 (Relay voice users).

Blackburn named to SNHU Dean's List

Jessica Blackburn of Livingston (40445) has been named to Southern New Hampshire University's Summer 2024 Dean's List. The summer terms run from May to August.

Full-time undergraduate students who have earned a minimum grade-point average of 3.500 to 3.699 for the reporting term are named to the Dean's List. Full-time status is achieved by earning 12 credits over each 16-week term or paired 8-week terms grouped in fall, winter/spring, and summer.

Southern New Hamp-

shire University (SNHU) is a private, nonprofit, accredited institution with a 92-year history of educating traditional-aged students and working adults. Now serving more than 200,000 learners worldwide, SNHU offers approximately 200 accredited undergraduate, graduate and certificate programs, available online and on its 300-acre campus in Manchester, NH.

Recognized as one of the "Most Innovative" regional universities by U.S. News & World Report and one of the fastest-growing universities

in the country, SNHU is committed to expanding access to high quality, af-

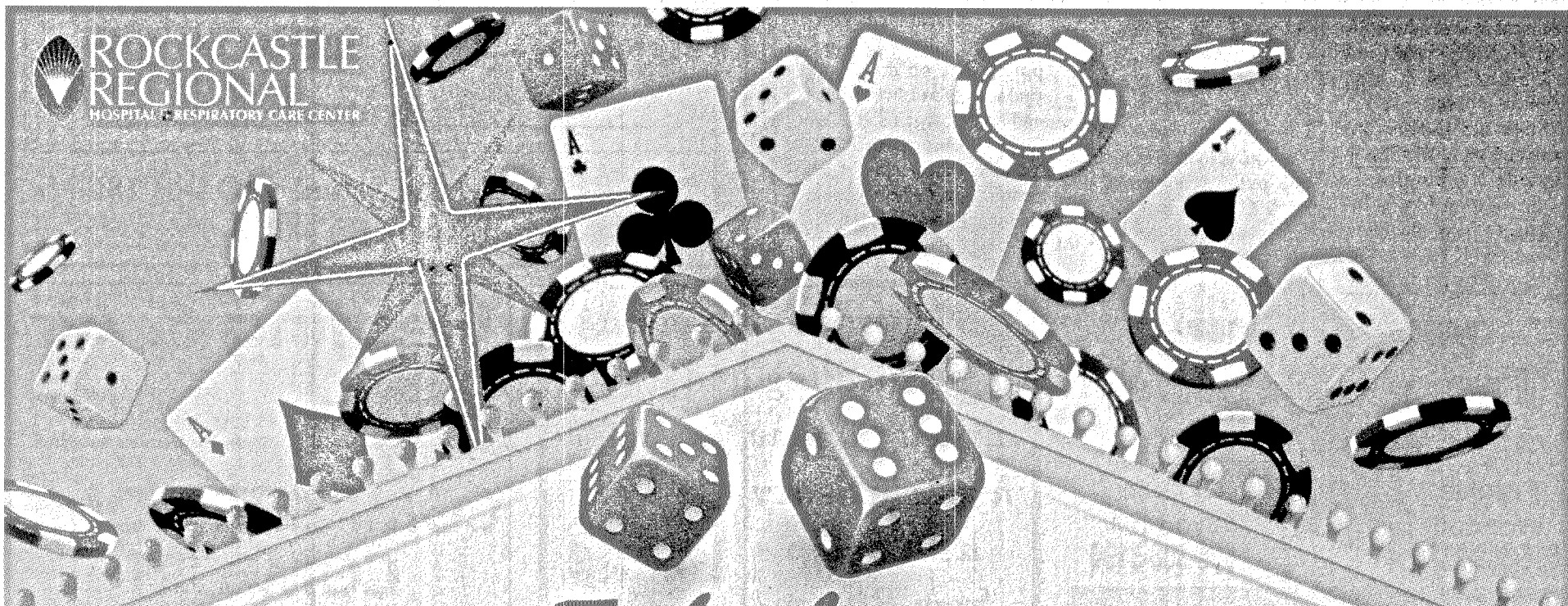

Traffic safety checkpoints

The Kentucky State Police, London Post which provides coverage for Clay, Laurel, McCreary, Pulaski, Rockcastle, Wayne and Whitley counties, will be conducting periodic traffic safety checkpoints at approved by the Kentucky State Police Policy and Procedures Manual. These checkpoints will be conducted in an effort to enforce the traffic laws of the Commonwealth of Kentucky. Special atten-

tion will be paid to occupant protection.

The Kentucky State Police utilizes traffic safety checkpoints to promote safety for motorists using the public roadways and to provide a deterrent for those who violate Kentucky driving laws.

A complete list of traffic safety checkpoint's location can be found at <https://www.kentuckystatepolice.ky.gov/post11checkpoints>



Fabulous LADIES NIGHT OUT

Breast Cancer Awareness Event

Tuesday, October 15
5:30 p.m. • Bible Baptist Church Gym
100 Higher Ground Ln • Mt Vernon KY

Guest Speaker:
Dr. Justin Williams
Rockcastle Hematology & Oncology Clinic

Featuring:
Free Meal
Free Gift
Health Education

To RSVP:
Call Kaitlyn Stratton
(606) 256-7381
by Friday, Oct. 11